

XTRIME 125R



OWNER'S MANUAL

Accessories and features shown may not be a part of standard fitment.

CIN: L35911DL1984PLC017354.



*Conditions apply

PREFACE

Thank you for selecting a Hero MotoCorp **XTREME 125R**. We wish you many miles of continued riding pleasure in the years ahead.

We at Hero MotoCorp, are committed to demonstrate excellence in our environment performance on a continual basis, as an intrinsic element of our corporate philosophy. To achieve this we commit ourselves to continue product innovations to improve environment compatibility, comply with all applicable legislation including environment legislation and strengthen the green supply chain.

Your vehicle is conforming to latest BS6 STAGE-VI (OBD STAGE II-A) regulation for emission, safety & noise levels. We are also using non asbestos brake shoes/pads and engine gaskets which are environment friendly in nature.

This vehicle is fitted with a lighting feature known as “Automatic Headlamp ON”. The feature is mandated for all 2 Wheelers by Ministry of Road Transport & Highways (Government of India) vide notification GSR 188 (E) dated 22nd February 2016. This feature helps in conspicuity for improving rider safety. The headlamp of this vehicle will always be lit ON when the engine gets ON.

This booklet is your guide to the basic operation and maintenance of your new Hero MotoCorp **XTREME 125R**. Please take time to read it carefully. As with any fine machine, proper care and maintenance are essential for trouble-free operation and optimum performance.

Your Authorised Hero MotoCorp dealer will be glad to provide further information or assistance and is equipped to handle your future service needs.

Let us make this world a safer, healthier and more environment friendly place.

 **NOTE**

ALL INFORMATION, ILLUSTRATION, PHOTOGRAPH, DIRECTIONS, SPECIFICATIONS AND OTHER CONTENTS COVERED IN THIS OWNER'S MANUAL ARE BASED ON THE LATEST PRODUCT INFORMATION AVAILABLE AT THE TIME OF ITS PUBLISHING APPROVAL, AND THE ACCURACY OR CORRECTNESS OF THE SAME IS NOT UNDERTAKEN OR GUARANTEED.

Hero MotoCorp Ltd **RESERVES THE RIGHT TO MAKE CHANGES IN ITS CONTENTS AT ANY TIME WITHOUT NOTICE AND/OR INCURRING ANY OBLIGATION, WHATSOEVER. NO ONE IS ALLOWED TO REPRODUCE ANY PART OF THIS PUBLICATION WITHOUT OBTAINING PRIOR WRITTEN PERMISSION FROM** Hero MotoCorp Ltd.

ACCESSORIES SHOWN MAY NOT BE THE PART OF STANDARD FITMENT. IT IS OUR ENDEAVOUR TO CONSTANTLY IMPROVE OUR PRODUCTS. THIS COULD LEAD TO CHANGE IN PRODUCT SPECIFICATIONS WITHOUT NOTICE. Hero MotoCorp Ltd **'XTREME 125R' COMPLIES WITH THE LATEST EMISSION NORMS.**

CONTENTS

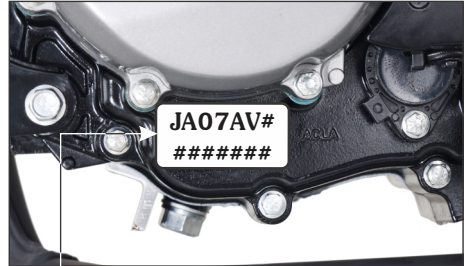
| | Pg. No. | Pg. No. |
|--|---------|---------|
| VEHICLE IDENTIFICATION | 1 | 55 |
| VEHICLE VIEWS | 2 | 56 |
| VEHICLE SPECIFICATION | 8 | 57 |
| VEHICLE SAFETY | 11 | 60 |
| • Important safety information | 11 | 61 |
| • Protective apparel | 12 | 62 |
| • Accessories & modifications | 13 | 63 |
| ANTI-THEFT TIPS | 13 | 64 |
| SAFE RIDING TIPS | 14 | 66 |
| TIPS FOR HEALTHY ENVIRONMENT | 16 | 68 |
| PART FUNCTION | 17 | 69 |
| • Ignition switch | 17 | 69 |
| • Instruments and indicators | 18 | 69 |
| • LCD panel | 24 | 73 |
| LOW FUEL INDICATOR | 28 | 73 |
| FEATURES | 28 | 76 |
| • Hero App | 28 | 77 |
| • Steering lock | 35 | 79 |
| • Gear indicator | 35 | 80 |
| HANDLEBAR SWITCHES CONTROL | 35 | 83 |
| ABS INDICATOR | 40 | 83 |
| SIDE STAND INDICATOR/SWITCH | 40 | 85 |
| FUEL | 42 | 86 |
| SEAT LOCK | 44 | 87 |
| SEAT | 44 | 87 |
| HELMET HOLDER | 46 | 88 |
| USB CHARGER | 46 | 89 |
| PRE-RIDE INSPECTION | 47 | 90 |
| STARTING THE ENGINE | 48 | 90 |
| RIDING | 50 | 93 |
| BRAKING | 51 | |
| PARKING | 54 | |
| TOOL KIT/FIRST AID KIT | 54 | |
| CLEANING AND WASHING OF VEHICLE | 55 | |
| 1 MAINTENANCE | | 55 |
| 2 SAFETY PRECAUTION | | 56 |
| 8 MAINTENANCE SCHEDULE | | 57 |
| 11 SPARK PLUG INSPECTION | | 60 |
| 11 ENGINE OIL | | 61 |
| 12 ENGINE OIL FILTER ELEMENT | | 62 |
| 13 OIL FILTER SCREEN | | 63 |
| 13 AIR CLEANER | | 64 |
| 14 VALVE CLEARANCE ADJUSTMENT | | 66 |
| 16 CLUTCH LEVER FREE PLAY | | 68 |
| 17 THROTTLE OPERATION | | 69 |
| 18 DRIVE CHAIN SLACKNESS | | 69 |
| 24 DRIVE CHAIN SLIDER INSPECTION | | 73 |
| 28 BRAKES | | 73 |
| 28 SUSPENSION | | 76 |
| 28 WHEEL | | 77 |
| 35 MAIN/SIDE STAND LUBRICATION | | 79 |
| 35 TUBELESS TYRES | | 80 |
| 35 NUT, BOLTS & FASTENERS | | 83 |
| 40 BATTERY | | 83 |
| 40 FUSE REPLACEMENT | | 85 |
| 42 STOP LAMP SWITCH | | 86 |
| 44 HEADLAMP FOCUS ADJUSTMENT | | 87 |
| 44 CATALYTIC CONVERTER | | 87 |
| 46 EVAPORATIVE EMISSION CONTROL SYSTEM | | 88 |
| 46 POLISHING OF VEHICLE | | 89 |
| 47 BASIC TROUBLESHOOTING | | 90 |
| 48 ROAD SIGNS | | 93 |
| 50 WARRANTY | | |
| 54 HERO GENUINE PARTS | | |
| 54 ZONAL/REGIONAL/AREA OFFICES | | |

VEHICLE IDENTIFICATION



Vehicle Identification Number (VIN)

Location: Stamped on the right side of the steering head tube.



Engine No.

Location: Stamped on the lower side of the left crankcase.

VIN: MBLJAU02#####

| | | | | | | |
|-------------------|---------------------|-------------|------------|------------|------------------------|--------------------------|
| MBL | JAU02 | # | # | # | # | ##### |
| Manufacturer code | Vehicle Description | Check Digit | Model Year | Plant Code | Month of Manufacturing | Production Serial Number |

Engine No.: JA07AV#####

| | | | | |
|--------------------|-----------------------|----------------|------------------------|---------------|
| JA07AV | # | # | # | ##### |
| Engine Description | Year of Manufacturing | Assembly Plant | Month of Manufacturing | Serial Number |

Model: XTREME 125R

| Variants | VIN | Engine |
|--|------------|---------------|
| Electric start/Cast wheel/Front disc/ABS | JAU02 | JA07AV |
| Electric start/Cast wheel/Front disc/IBS | JAW44 | JA07AV |

VIN and Engine No. may be required:

- During registration of the vehicle.
- For dealing with legal & insurance departments.

FRONT VIEW

VEHICLE VIEWS



- (1) Front fender
- (2) Headlamp (High beam)
- (3) Front right turn signal lamp
- (4) Right position lamp
- (5) Front brake master cylinder/Reservoir

- (6) Left position lamp
- (7) Front left turn signal lamp
- (8) Front cowl
- (9) Headlamp (Low beam)
- (10) Leg guard

***Accessories and features shown may not be part of standard fitment.**

REAR VIEW

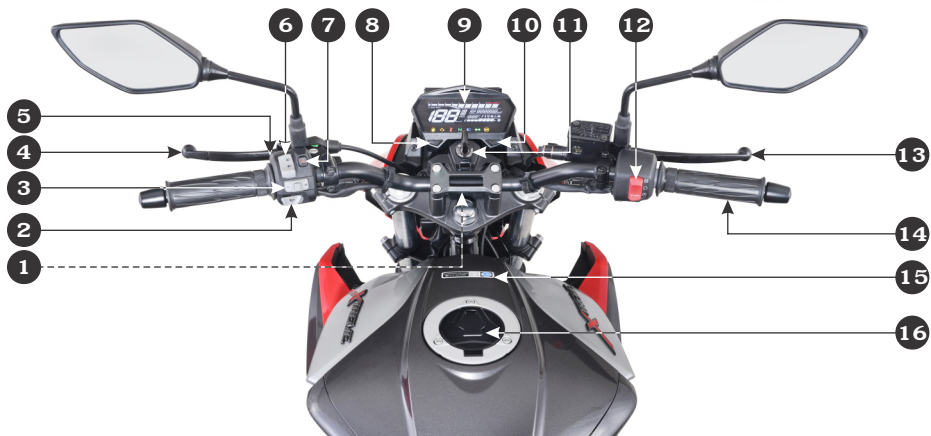


- (1) Rear reflex reflector
- (2) Licence plate lamp
- (3) Left rear turn signal lamp
- (4) Tail/stop lamp

- (5) Rear view mirror
- (6) Rear fender
- (7) Right rear turn signal lamp
- (8) Rear hugger fender

***Accessories and features shown may not be part of standard fitment.**

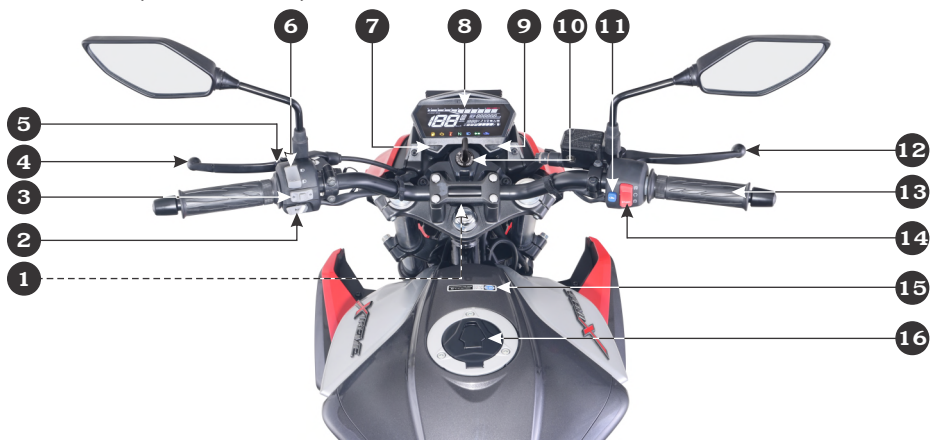
TOP VIEW (ABS VARIANT)



- | | |
|----------------------------|-----------------------------------|
| (1) USB charger | (9) Meter console |
| (2) Horn switch | (10) Mode button |
| (3) Turn signal switch | (11) Ignition switch with key |
| (4) Clutch lever | (12) Integrated start-kill switch |
| (5) Passing switch | (13) Front brake lever |
| (6) Headlamp dimmer switch | (14) Throttle grip |
| (7) Hazard switch | (15) QR code/E20 sticker |
| (8) Set button | (16) Fuel tank cap |

***Accessories and features shown may not be part of standard fitment.**

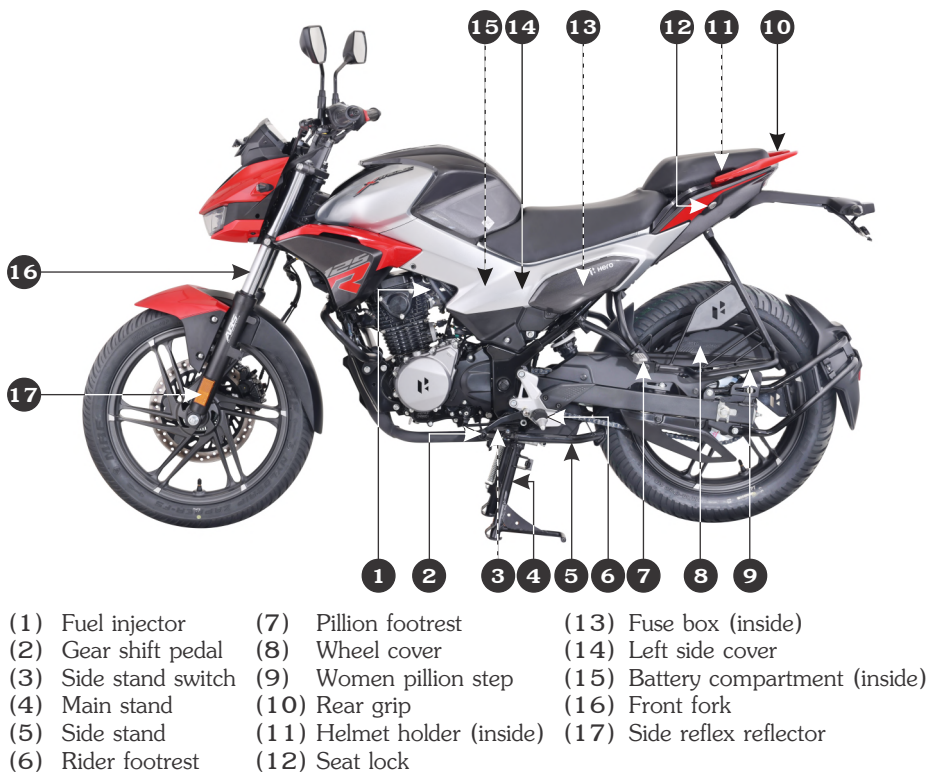
TOP VIEW (IBS VARIANT)



- | | |
|----------------------------|-----------------------------------|
| (1) USB charger | (9) Mode button |
| (2) Horn switch | (10) Ignition switch with key |
| (3) Turn signal switch | (11) i3s switch |
| (4) Clutch lever | (12) Front brake lever |
| (5) Passing switch | (13) Throttle grip |
| (6) Headlamp dimmer switch | (14) Integrated start-kill switch |
| (7) Set button | (15) QR code/E2O sticker |
| (8) Meter console | (16) Fuel tank cap |

***Accessories and features shown may not be part of standard fitment.**

LEFT SIDE VIEW



***Accessories and features shown may not be part of standard fitment.**

RIGHT SIDE VIEW



- | | | |
|----------------------------|---------------------------------|-------------------------------------|
| (1) Mono shock absorber | (8) Front disc | (13) First aid compartment (inside) |
| (2) Starter motor | (9) Fuel tank cover | (14) Tool kit compartment (inside) |
| (3) Brake pedal | (10) Throttle body/ECU (inside) | (15) Pillion seat |
| (4) Oil level window | (11) Right side cover | (16) Exhaust muffler |
| (5) Oil filler cap | (12) Rider seat | |
| (6) Kick starter pedal | | |
| (7) Front caliper assembly | | |

***Accessories and features shown may not be part of standard fitment.**

VEHICLE SPECIFICATION

| ITEM | | SPECIFICATIONS |
|-----------------------|----------------|---|
| Dimensions | | |
| Overall length | | 2009 mm |
| Overall width | | 793 mm |
| Overall height | | 1051 mm |
| Wheelbase | | 1319 mm |
| Saddle height | | 794mm |
| Ground clearance | | 180 mm |
| Weight | | |
| Kerb weight | | 136.0 kg |
| Capacities | | |
| Engine oil | | 1.2 litres at disassembly and 1.0 litre at draining |
| Fuel tank | | 10 litres |
| Hydraulic brake fluid | | DoT-3 or DoT-4 |
| Engine | | |
| Maximum power | | 8.5 kW @ 8250 r/min |
| Maximum torque | | 10.5 N-m @ 6500 r/min |
| Bore and stroke | | 52.4x57.8 mm |
| Compression ratio | | 9.9:1 |
| Displacement | | 124.7 cc |
| Spark plug | | P-RG6HCC (Federal Mogul) |
| Spark plug gap | | 0.8-0.9 mm |
| Valve clearance | Intake (cold) | 0.08 mm±0.02 mm |
| | Exhaust (cold) | 0.12 mm±0.02 mm |
| Idle speed | | 1400±100 r/min |

VEHICLE SPECIFICATION

| ITEM | | SPECIFICATIONS |
|-------------------------------|-------------|--|
| Chassis and suspension | | |
| Front suspension | | Telescopic hydraulic |
| Rear suspension | | Rectangular swingarm with 7 step preload adjustable monoshock |
| Caster angle | | 24° |
| Trail length | | 89 mm |
| Tyre size | Front | 90/90 17 49 P (Tubeless tyre) |
| | Rear | 120/80 17 61 P (Tubeless tyre) |
| Front brake | ABS variant | Disc type (Dia. 276 mm) |
| | IBS variant | Disc type (Dia. 240 mm) |
| Rear brake | ABS variant | Drum type (Dia. 130 mm) |
| | IBS variant | Internal expanding shoe type (Dia. 130 mm) (Integrated braking system) |
| Transmission | | |
| Primary reduction | | 3.35 (67/20) |
| Final reduction | | 3.214 (45/14) |
| Gear box | | 5 Speed constant mesh |
| Gear ratio, 1 st | | 3.455 (38/11) |
| 2 nd | | 1.94 (33/17) |
| 3 rd | | 1.318 (29/22) |
| 4 th | | 1.04 (26/25) |
| 5 th | | 0.923 (24/26) |
| Electricals | | |
| Battery | | *MF Battery-12V-4 Ah/ETZ5 |
| Alternator | | 120 W@5000 r/min |
| Headlamp (High/Low) | | LED |
| Position lamp | | LED |
| Tail/Stop lamp | | LED |
| Turn signal lamp | | LED |
| Meter illumination | | LED |

*MF stands for Maintenance Free

VEHICLE SPECIFICATION

| ITEM | | SPECIFICATIONS |
|----------------------------------|-------------|---|
| Neutral indicator | | LED |
| Turn signal indicator (RH/LH) | | LEDx2 |
| Hi beam indicator | | LED |
| ABS indicator | ABS variant | LED |
| i3s indicator | IBS variant | LED |
| Low fuel indicator | | LED |
| Service reminder indicator | | Module illuminated LCD |
| Licence plate lamp | | 12V-3.0W |
| Side stand indicator | | LED |
| Malfunction indicator lamp (MIL) | | LED |
| Fuse | ABS variant | 15A, 10A, 10A, 10A, 10A & 10A (Main fuse) |
| | | 15A & 10A (Spare fuse) |
| | IBS variant | 10A, 10A, 10A, 10A & 10A (Main fuse) |
| | | 10A (Spare fuse) |

VEHICLE SAFETY

IMPORTANT SAFETY INFORMATION

Your vehicle can provide many years of service and pleasure if you take responsibility for your own safety and understand the challenges you can meet on the road.

There is much that you can do to protect yourself when you ride. You will find many helpful recommendations through out this manual. Following are a few that we consider most important.

Always wear a helmet

It is a proven fact, helmet significantly reduces the number and severity of head injuries. So always wear a helmet and make sure your pillion rider does the same. We also recommend that you wear eye protection, sturdy boots, gloves and other protective gear.

Before riding your vehicle

Make sure that you are physically fit, mentally focused and free of alcohol and drugs. Check that you and your pillion are both wearing an approved vehicle helmet and protective apparel. Instruct your pillion on holding onto the grab rail or your waist, leaning with you in turns, and keeping their feet on the footrest, even when the vehicle is stopped.

Take time to learn & practice your vehicle

Even if you have ridden other vehicles, practice riding in a safe area to become familiar with how this vehicle works and handles, and to become accustomed to the vehicle's size and weight.

Ride defensively

Always pay due attention to other vehicles around you, and do not assume that other drivers see you. Be prepared to stop quickly or perform an evasive maneuver.

Make yourself easily visible

Some drivers do not see vehicles because they are not looking for them. To make yourself more visible, wear bright reflective clothing, position yourself so that others can see you, signal before turning or changing lanes, and use horn which will help others to notice you.

Ride within your limits

Pushing the limits is another major cause of vehicle accidents. Never ride beyond your personal abilities or faster than conditions demand. Remember that fatigue and negligence can significantly reduce your ability to make good judgements and ride safely.

Do not drink and ride

Riding under the influence of alcohol or drugs is dangerous. Alcohol can reduce your ability to respond to changing conditions and reduce the reaction time. Do not drink and ride.

Keep your vehicle in safe condition

For safe riding, its important to inspect your vehicle before every ride and perform all recommended maintenance. Never exceed load limits, and use accessories that have been recommended by Hero MotoCorp for this vehicle. See **(page 14)** for more details.

If you are involved in a crash

Personal safety is your first priority. If you or anyone else has been injured, take time to assess the severity of the injuries and whether it is safe to continue riding. Call for emergency assistance if needed. Also follow applicable laws and regulations if another person or vehicle is involved in the crash.

If you decide to continue riding, first evaluate the condition of your vehicle. If the engine is still running, turn it off. Inspect for fluid leaks, check the tightness of critical nuts and bolts, and check the handlebar, brake levers, brakes, and wheels. Ride slowly and cautiously. Your vehicle may have suffered damage that is not immediately apparent. Have your vehicle thoroughly checked at a qualified service facility as soon as possible.

PROTECTIVE APPAREL

For your safety, we strongly recommend that you always wear an approved helmet (ISI marked), eye protection, boots, gloves, long pants and a long sleeve shirt or jacket whenever you ride. Take care of loose/hanging clothes while solo/pillion riding. Although complete protection is not possible, wearing proper gear can reduce the chance of injury when you ride.

Following are suggestions to help you choose proper riding gear.

WARNING

- ***Not wearing a helmet increases the chance of serious injury or death in a crash.***
- ***Be sure you and your pillion always wear a helmet, eye protection and other protective apparel when you ride.***

Helmets and eye protection

Your helmet is your most important piece of riding gear because it offers the best protection against head injuries. A helmet should fit your head comfortably and securely. A bright coloured helmet can make you more noticeable in traffic, as can reflective strips. An open-face helmet offers some protection, but a full-face helmet offers more. Always wear face shield or goggles to protect your eyes and help your vision.

Additional riding gear

In addition to a helmet and eye protection, we also recommend:

- Sturdy boots with non-slip soles to help protect your feet and ankles.
- Leather gloves to keep your hands warm and help prevent blisters, cuts, burns, and bruises.
- A two wheeler riding suit or jacket for comfort as well as protection. Bright coloured reflective clothing can help make you more noticeable in traffic. Be sure to avoid loose clothes that could get caught on any part of your vehicle.

ACCESSORIES & MODIFICATIONS

Modifying your vehicle or using non-Hero MotoCorp accessories can make your vehicle unsafe. Before you consider making any modifications or adding an accessory, be sure to read the following information.

WARNING

- ***Improper accessories or modifications can cause a crash in which you can be seriously hurt or killed.***
- ***Follow all instructions in this owner's manual regarding accessories and modifications.***

Accessories

- Make sure that the accessory does not obscure any lamps, reduce ground clearance, limit suspension travel or steering travel, affect your riding position or interfere with operating any controls.
- Be sure electrical equipment does not exceed the vehicle's electrical system capacity (**page 9**). A blown fuse can cause a loss of lights.
- Do not pull a trailer or sidecar with your vehicle. This vehicle was not designed for these attachments, and their use can seriously impair your vehicle's handling.

Modifications

We strongly advise you not to remove any original equipment or modify your vehicle in any way that would change its design or operation. Such changes could seriously impair your vehicle's handling, stability and braking, making it unsafe to ride. Removing or modifying your lamps, mufflers, emission control system or other equipment can also make your vehicle illegal.

ANTI-THEFT TIPS

- Always lock the steering and never leave the key in the ignition switch. This sounds simple but people do forget.
- Be sure the registration information for your vehicle is accurate and correct.
- Park your vehicle in a locked garage whenever possible.
- Use an additional anti-theft device of good quality.
- Never park your vehicle in an isolated area. Park as far as possible in a designated area.
- Keep a note in your vehicle all the time with your name, address and contact details.

Do's:

- Always conduct simple pre-ride inspection (**page 47**).
- Always wear a helmet (ISI marked) with chin strap securely fastened and insist on a helmet for your pillion rider.
- While riding, sit in a comfortable position with your legs close to fuel tank.
- Ride defensively and at a steady speed (between **40–50 km/hr**).
- **IBS variant:** To stop the vehicle (in IBS), press the rear brake pedal for the application of front and rear brakes simultaneously. However, for more effective braking, use both brakes simultaneously, keeping throttle in the closed position.
- For stopping vehicle, use both brakes simultaneously, keeping throttle in the closed position.
- Respect road signs and obey traffic rules for your own safety and that of others on the road (**page 93**).
- During night time, dip headlamps of your vehicle for oncoming traffic, or when following another vehicle.
- Give way to others on the road and signal before you make a turn.
- To make yourself more visible, wear bright reflective clothing that fits well.
- Take care of loose/hanging clothes while solo/pillion riding.
- Get your vehicle serviced regularly by the Authorised Hero MotoCorp workshop.
- Before riding make sure that integrated start-kill switch is in “ON” (ⓘ) position.
- **ABS variant:** Keep checking the ABS indicator. At any point if indicator remains on, then ABS is not working (**page 40**).
- **ABS variant:** Keep checking speedometer. In case of ABS malfunction, speed display may go to zero.
- **ABS variant:** It is suggested to go through the do's & dont's of ABS (**page 51**) and practice riding your ABS vehicle initially in low-traffic condition unless you are thoroughly familiar with your vehicle and its controls.
- **IBS variant:** Before riding make sure in which mode you are riding whether with i3s switch “ON” or “OFF”.

Don'ts

- Never use cell phone while riding the vehicle.
- Avoid sudden acceleration, braking and turning of your vehicle.
- Never shift gears without disengaging the clutch and closing the throttle.
- Never touch any part of the hot exhaust system like muffler.
- Never ride under the influence of alcohol or drugs.
- Concentrate on the road and avoid talking to the pillion rider or others on the road.
- Do not litter the road.
- Do not cross the continuous white/yellow line in the center of the road, while overtaking.
- Do not attach large or heavy items to the handlebars, front forks, or fenders.
- Never take your hands off the steering handle while riding.
- **ABS variant:** Do not attempt to apply the front brake lever intermittently for ABS vehicle.
- **ABS variant:** Do not panic by mechanical noises or slight pedal pulses while applying the brake in vehicle. These conditions are normal and indicates that ABS is working.
- Don't apply hard braking on loose, wet or slippery road surfaces.
- Do not switch off the integrated start-kill switch (⊗) while riding the vehicle (**page 37**).
- Do not move the side stand down while riding, as engine will stop while vehicle is in gear (**page 41**) (Wheel locking leading to accident, part damage etc.).

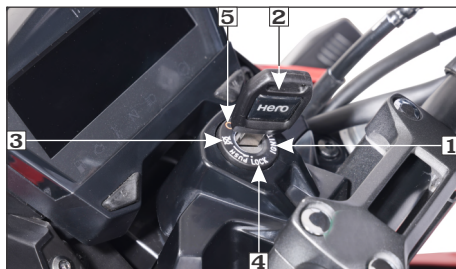
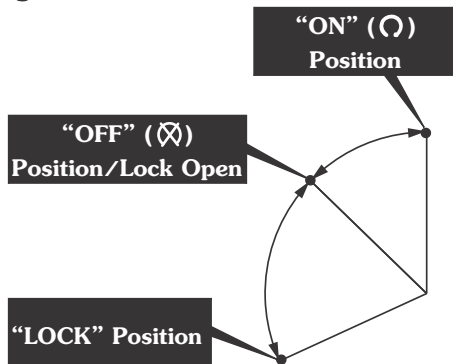
TIPS FOR HEALTHY ENVIRONMENT

The following tips shall ensure a healthy vehicle, healthy environment, and a healthy you.

- **Healthy engine:** The engine is the lifeline of every vehicle. To keep it healthy, it should be tuned regularly, which will also help reduce pollution and improve vehicle performance & fuel efficiency.
- **Regular servicing:** Get your vehicle serviced at an Authorised Hero MotoCorp workshop, as per the service schedule, for an optimum performance and keep the emission level under check.
- **Genuine spares:** Always insist on Hero MotoCorp genuine parts as spurious or incompatible spares and accessories can upset or deteriorate your vehicle's running condition.
- **Genuine engine oil:** Hero 4T Plus SAE 10W 30 SL grade (JASO MA2) engine oil recommended by Hero MotoCorp and make sure you change it every 6000 km. (with top up every 3000 kilometres) to keep the engine fit and environment healthy.
- **Noise pollution:** Noise beyond a certain decibel is pollution. Whether it is from horns or defective mufflers, excessive noise will cause headaches and discomfort.
- **Emission pollution:** Get emission of your vehicle checked by Authorised agencies atleast once every 3 months or as notified by the government from time to time.
- **Fuel saving & reduce pollution:** Switch "OFF" the engine while waiting at traffic signal points to save fuel and reduce pollution, if the waiting period is long.
- **BS-VI grade fuel :** Always use BS-VI grade fuel to adhere BS-VI norms.

PARTS FUNCTION

Ignition switch



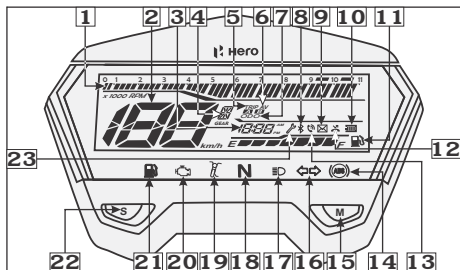
1. Ignition switch
2. Ignition key
3. "OFF" (X) position
4. Steering lock position
5. "ON" (O) position

| Key position | Function | Key removal |
|--------------|---|------------------------|
| "ON" (O) | The LCD panel illuminates & initial display of multi function digital segments are displayed. The tachometer segment and the fuel gauge segment will swing to the maximum scale once and back to its normal position. odometer will appear. The engine can be started. Turn signal lamp, horn, tail/stop lamp, fuel gauge, passing switch, position lamp, malfunction indicator lamp (MIL) illuminates continuously, neutral indicator & hazard switch will be functional. i3s indicator glows for 2 seconds (For IBS variant). | Key cannot be removed. |
| "OFF" (X) | Engine cannot be started and no electrical system will be functional. | Key can be removed. |
| "LOCK" | Steering handle can be locked. | Key can be removed. |

Instruments and Indicators

(ABS variant)

The indicators are in the speedometer panel above the headlamp. The functions are as below.



| Sl. No. | Description | Function |
|---------|------------------------------------|--|
| 1 | Tachometer | Shows engine revolution per minute. The tachometer digital segments will swing to maximum scale on the meter console once the ignition switch is turned "ON". |
| 2 | Speedometer | Indicates riding speed. |
| 3 | Digital clock | Indicates hours & minutes (page 24). |
| 4 | Gear indicator | Displays the selected gear while riding (page 35). |
| 5 | Tripmeter A & B | Shows the distance travelled during a trip after setting to zero (page 25). |
| 6 | Real time mileage indicator (RTMI) | It indicates the current mileage of the vehicle (in km/litre). The indication will change after every 3 seconds depending upon the driving condition (page 27). |
| 7 | Odometer | Shows accumulated distance travelled (page 25). |
| 8 | Bluetooth | On pairing (page 28), the meter console displays a bluetooth symbol, indicating bluetooth is connected. |
| 9 | Message alert | If your smartphone (android) is paired with the meter console of your vehicle via bluetooth (page 28), then you will get all the message alert on the meter console (page 33). |

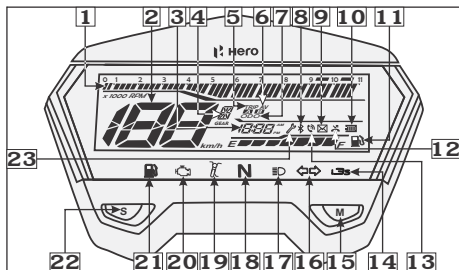
| Sl. No. | Description | Function |
|---------|--|--|
| 10 | Phone battery status | If your smartphone is paired with the meter console of your vehicle via bluetooth (page 28), then it will display battery status of smartphone on the meter console (page 33). |
| 11 | Fuel gauge | Indicates approximate fuel quantity in the form of digital segments. The fuel gauge segments will display its maximum scale on the fuel gauge LCD panel once when the ignition switch it turned "ON" (page 27). |
| 12 | Missed call alert | If your smartphone is paired with the meter console of your vehicle via bluetooth (page 28), then you will get all the missed call alert on the meter console (page 33). |
| 13 | Incoming call alert | If your smartphone is paired with the meter console of your vehicle via bluetooth (page 28), then you will get all the incoming call alert on the meter console (page 32). |
| 14 | Anti-lock braking system (ABS) indicator | This indicator normally comes on for approx 1.8 seconds when the ignition switch is turned "ON" (O) & then keeps blinking until the vehicle attains speed of 5 km/h. If there is a problem with the anti-lock brake system, ABS indicator turns on (page 40). |
| 15 | Mode button | Switches display between odometer, tripmeter-A & B and RTMI. |
| 16 | Turn signal indicators | Flashes when turn signal switch is operated. |
| 17 | High beam indicator | Light glows when headlamp is in high beam. |
| 18 | Neutral indicator | Light glows when vehicle is in neutral position. |
| 19 | Side stand indicator | Light glows when the vehicle is parked on the side stand. |

| Sl. No. | Description | Function |
|---------|----------------------------------|---|
| 20 | Malfunction indicator lamp (MIL) | When the ignition switch is turned “ON” the malfunction indicator lamp (MIL) glows continuously and then should go “OFF” once the engine is started. It indicates that vehicle is OK. If it glows continuously there is an abnormality in the vehicle, it is recommended to reduce the speed and drive to the Authorised Hero MotoCorp workshop for check-up. |
| 21 | Low fuel indicator | Light glows when the fuel quantity is low (page 28) . |
| 22 | Set button | To adjust clock & tripmeter. When long pressed, resets tripmeter to zero. |
| 23 | Service reminder indicator | Display when the next service is due (page 26) . |

Instruments and Indicators

(IBS variant)

The indicators are in the speedometer panel above the headlamp. The functions are as below.



| Sl. No. | Description | Function |
|---------|------------------------------------|--|
| 1 | Tachometer | Shows engine revolution per minute. The tachometer digital segments will swing to maximum scale on the meter console once the ignition switch is turned “ON”. |
| 2 | Speedometer | Indicates riding speed. |
| 3 | Digital clock | Indicates hours & minutes (page 24). |
| 4 | Gear indicator | Displays the selected gear while riding (page 35). |
| 5 | Tripmeter A & B | Shows the distance travelled during a trip after setting to zero (page 25). |
| 6 | Real time mileage indicator (RTMI) | It indicates the current mileage of the vehicle (in km/litre). The indication will change after every 3 seconds depending upon the driving condition (page 27). |
| 7 | Odometer | Shows accumulated distance travelled (page 25). |
| 8 | Bluetooth | On pairing (page 28), the meter console displays a bluetooth symbol, indicating bluetooth is connected. |
| 9 | Message alert | If your smartphone (android) is paired with the meter console of your vehicle via bluetooth (page 28), then you will get all the message alert on the meter console (page 33). |

| Sl. No. | Description | Function |
|----------------|------------------------|---|
| 10 | Phone battery status | If your smartphone is paired with the meter console of your vehicle via bluetooth (page 28) , then it will display battery status of smartphone on the meter console (page 33) . |
| 11 | Fuel gauge | Indicates approximate fuel quantity in the form of digital segments. The fuel gauge segments will display its maximum scale on the fuel gauge LCD panel once when the ignition switch it turned "ON" (page 27) . |
| 12 | Missed call alert | If your smartphone is paired with the meter console of your vehicle via bluetooth (page 28) , then you will get all the missed call alert on the meter console (page 33) . |
| 13 | Incoming call alert | If your smartphone is paired with the meter console of your vehicle via bluetooth (page 28) , then you will get all the incoming call alert on the meter console (page 32) . |
| 14 | i3s indicator | Indicator glows for 2 seconds and turns "OFF" indicating that i3s system is functional. |
| 15 | Mode button | Switches display between odometer, tripmeter-A & B and RTMI. |
| 16 | Turn signal indicators | Flashes when turn signal switch is operated. |
| 17 | High beam indicator | Light glows when headlamp is in high beam. |
| 18 | Neutral indicator | Light glows when vehicle is in neutral position. |
| 19 | Side stand indicator | Light glows when the vehicle is parked on the side stand. |

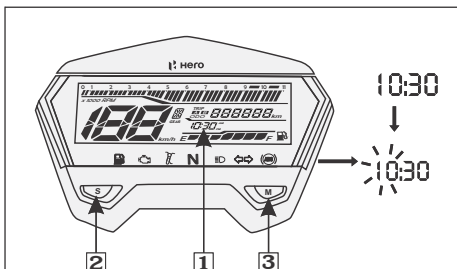
| Sl. No. | Description | Function |
|---------|----------------------------------|---|
| 20 | Malfunction indicator lamp (MIL) | When the ignition switch is turned “ON” the malfunction indicator lamp (MIL) glows continuously and then should go “OFF” once the engine is started. It indicates that vehicle is OK. If it glows continuously there is an abnormality in the vehicle, it is recommended to reduce the speed and drive to the Authorised Hero MotoCorp workshop for check-up. |
| 21 | Low fuel indicator | Light glows when the fuel quantity is low (page 28) . |
| 22 | Set button | To adjust clock & tripmeter. When long pressed, resets tripmeter to zero. |
| 23 | Service reminder indicator | Display when the next service is due (page 26) . |

LCD PANEL

(a) Digital clock

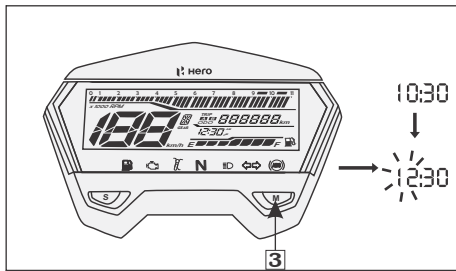
Digital clock (1) shows hour and minute. To adjust the time, proceed as follows :

- Turn the ignition switch "ON" (⊙).
- Press and hold set button (2) and mode button (3) simultaneously for more than 2 seconds. The clock will be set in the adjust mode with the hour's digit display blinking.



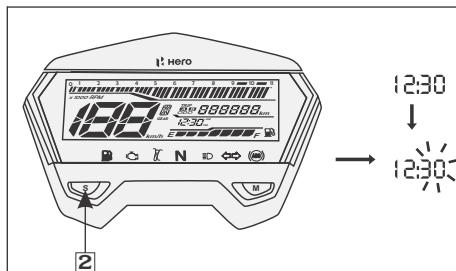
(1) Digital clock (2) Set button
(3) Mode button

- To set the hour, press mode button (3) until the desired hour is displayed.
 - The time is advanced by 1 hour each time the button is pressed.
 - The time advances fast when the button is pressed and held.
 - "AM" will change to "PM" after 12.



(3) Mode button

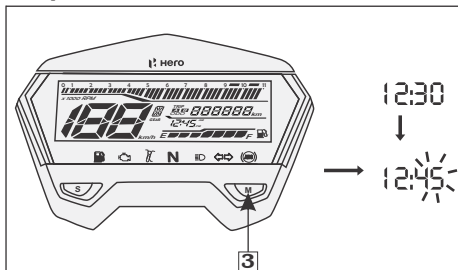
- Press the set button (2). The minutes display starts blinking.



(2) Set button

- To set the minute press mode button (3) until the desired minute is displayed. The minute display will return to "00" when "60" is reached without affecting the hour display.
 - The time advances by 1 minute, each time the button is pressed.

- The time advances fast when the button is pressed and held.



(3) Mode button

- To end the adjustment press set button (2). The display will stop flashing automatically and it will return to its previous value if the button is not pressed for 30 seconds or more.



NOTE

The clock will reset "AM: 1:00" if the battery is disconnected.

(b) Odometer/Tripmeter

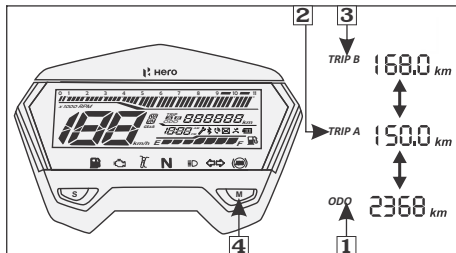
The odometer (1) shows accumulated distance travelled.

The tripmeter shows distance travelled since trip meter was reset last time. There are two tripmeters, tripmeter-A (2) and tripmeter-B (3).

Push the mode button (4) to select odometer, tripmeter-A or tripmeter-B. Tripmeter-A or tripmeter-B can be displayed upto "99999.9" km.

If the tripmeter exceeds "99999.9" km it will return to "0.0" km automatically. When tripmeter is selected long press the set button to reset tripmeter to zero.

The odometer can be displayed from "0 to 999999" km.



(1) Odometer

(3) Tripmeter-B

(2) Tripmeter-A

(4) Mode button

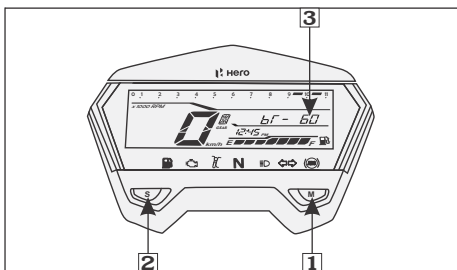
(c) LCD backlight brightness control

The LCD backlight brightness can be adjust.

The range of the brightness is from 20% (minimum) to 100% (maximum).

To change the brightness level of the LCD backlight, follow the below procedure:

- Turn the ignition switch "ON" (⊙).
- Press and hold the mode button (1) for more than 3 seconds. Brightness level mode will appear.
- Press the set button (2) (not more than 1 second) to change the brightness level (3).



- (1) Mode button** **(2) Set button**
(3) Brightness level

- The brightness level will change in multiple of 20%.
- Once the brightness level is set, press and hold the mode button until the brightness mode disappears.
- After setting the brightness level, if the mode button is not pressed and held until 30 seconds then the last brightness level shall be stored and returned to normal mode.



NOTE

- **The default brightness level is 60%.**
- **Every ignition “OFF” to “ON” will display the last set brightness level.**
- **To set the brightness level, the speed of the vehicle should be less than 3km/hr.**
- **If the vehicle's speed is more than 3km/hr, and the desired brightness level is set then it will not be stored and will return to normal mode.**

(d) Service reminder indicator

The service reminder indicator (1) is to indicate the user to bring the vehicle to an Authorised Hero MotoCorp workshop for service. The indicator shall start blinking when the vehicle covers kilometers as specified in the maintenance schedule. The indicator will keep on blinking throughout the kilometer interval for a particular service and will stay “ON” thereafter.

The service reminder indicator can be reset at an Authorised Hero MotoCorp workshop.



- (1) Service reminder indicator**



NOTE

After getting the vehicle serviced, make sure that the service reminder indicator has been reset.

(e) Fuel gauge

The fuel gauge (1) indicates approximate fuel available in the form of digital segments.



(1) Fuel gauge

(2) Segments

The digital segments (2) will swing to maximum scale on the meter console once the ignition switch is turned “ON” (⊙). If all the segments are displayed it means fuel quantity in the fuel tank is 10 litres.

(f) Real time mileage indicator (RTMI)

The real time mileage indicator (RTMI) “Av” (1) shows the current mileage of the vehicle in km/litre and is refreshed after every 3 seconds.

To display RTMI, keep pressing and releasing mode button (2) until RTMI is displayed.



(1) Real Time Mileage Indicator (RTMI) “Av”

(2) Mode button

When the ignition switch is turned “ON” (⊙) position, the real time mileage indicator will temporarily show the digit “---.” which indicates that all the digital LCD segments are working. The display range is from (0 to 120 km/litre).

The fuel consumption shall be displayed when the speed of the vehicle is more than 5 ± 2 km/hr. If the speed is less than 5 ± 2 km/hr “---.” shall be displayed.

The RTMI shows a minimum value of 0.0km/litre and maximum value of 120 km/litre. During coasting with throttle fully closed, the fuel consumption is very minimal and hence the display can go up to 120 km/litre.

NOTE

While riding, RTMI will show its first reading at 10 seconds with minimum vehicle speed of 5 kmph and thereafter will update in every 3 seconds.

LOW FUEL INDICATOR

Low fuel indicator (1) is a warning indicator for the user to fill the fuel as soon as possible.



(1) Low fuel indicator

! CAUTION

Please ensure the vehicle is not used with low fuel indicator glowing continuously. It will not only result in the vehicle running out of fuel, it may also cause serious damage to the fuel pump. Please ensure fuel is filled up as soon as the low fuel indicator starts glowing.

NOTE

To check the fuel level indication, the vehicle should be on levelled surface and in stationary condition.

FEATURES

(a) Hero App Application:

Hero App is available in the google play store (for androids) or App Store (for iOS), which can be installed in your device to access bluetooth, incoming calls alerts, missed call alerts, mobile battery status and message alert.

Bluetooth:

Your vehicle is equipped with bluetooth connectivity feature by which you can pair your smartphone with the meter console of your **XTREME 125R** vehicle through Hero App.

To connect your device proceed as follows:

- Open Hero App on your smartphone.
- Application asks the user to login (1) using registered mobile number.
- Now user will receive the 6-digit OTP on registered mobile number.
- User required to enter the 6-digit OTP (2) and verify.



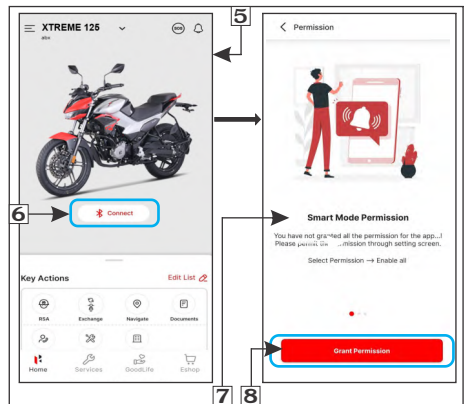
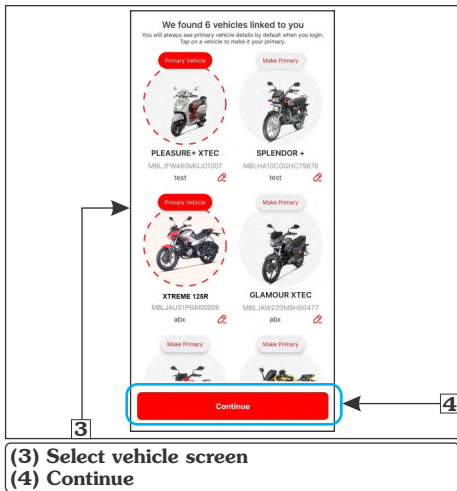
(1) Login

(2) Enter OTP

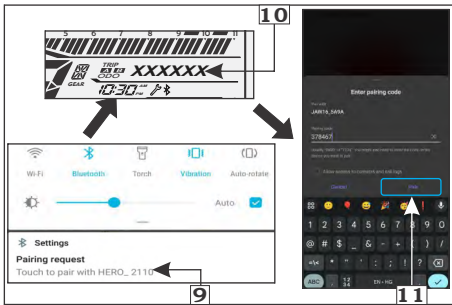
NOTE

- **Compatibility and performance of Hero App may vary based on your device and software version.**
- **Application needs GPS signal, internet and bluetooth connectivity to perform the desired functionality.**

- After successful verification, select vehicle screen (3) will be replicated on mobile screen. Tap on the vehicle image to continue.
- Select the vehicle and click on “Continue” (4).
- After selecting the vehicle, user can view the Dashboard (5) with Connect button visible
- After clicking on ‘Connect’ (6).
- Now application asks the user to give the smart mode permission (android) (7) for DND mode, where phone will be in vibrate mode from ringing.
- After granting permission (8) user will be able to access the DND feature.



- Now application will send pairing request notification (9). Click on the notification
- Now meter console will display pairing pin (10).
- Enter the pin in application screen and select “Pair” (11).

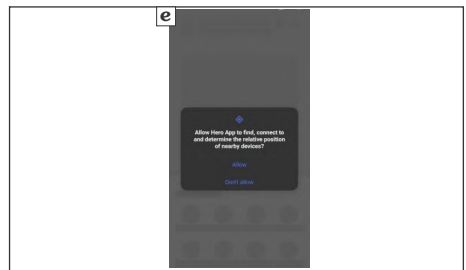
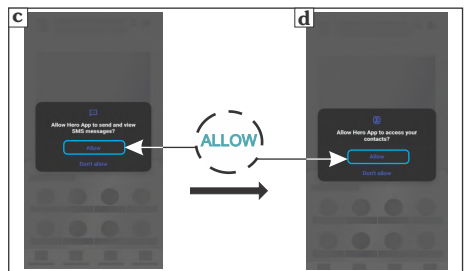
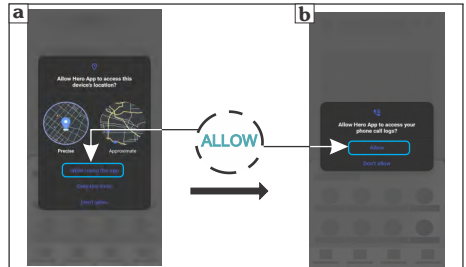


(9) Pairing request notification

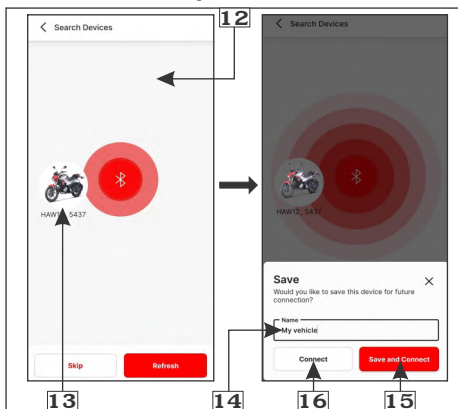
(10) Pin

(11) “Pair”

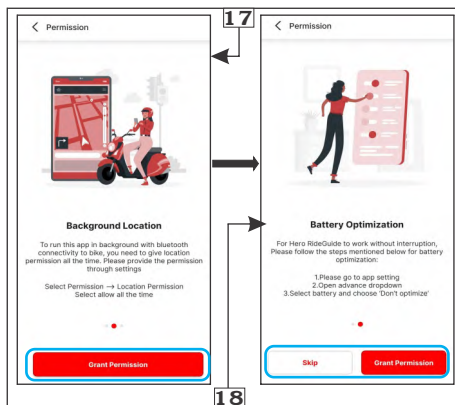
- For first time pairing, allow the application to access:
 - a. Device location if GPS not enabled in your device, Nearby device permission.
 - b. Phone call logs on your device.
 - c. Send and view SMS messages.
 - d. Contacts.
 - e. Bluetooth connectivity.



- In order to connect the vehicle with Hero App click on “Connect” (**page 29**).
- User will be redirect to the Bluetooth searching screen (12).
- The application searches for a while and displays all compatible nearby devices. Select the device (13).
- Update your name (14) (if required) and select either save and connect (15) or connect (16) to proceed.
- Now application asks the user to run the application on background (17). It can be done by following the steps which are mentioned in the application and click OK.
- Now application asks the user to turn the battery optimization off (18). It can be done by following the steps which are mentioned in the application or the user can ignore this step.

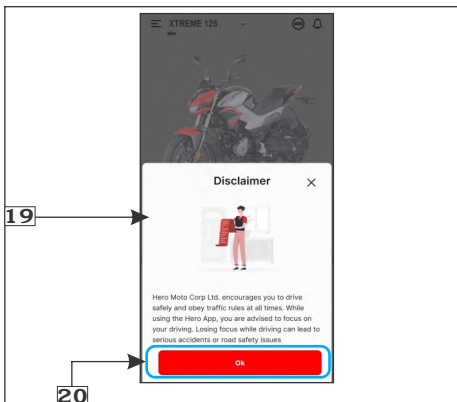


- (12) Bluetooth searching screen
 (13) Select the device
 (14) Update your name
 (15) Save and connect
 (16) Connect



- (17) Run application in background
 (18) Battery optimization

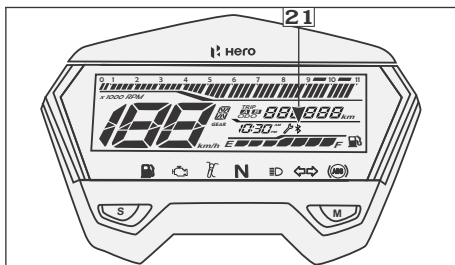
- Disclaimer popup (19) instruction will show, click on “Ok” (20) to dismiss the popup.



(19) Disclaimer popup

(20) Ok

- On pairing, meter console displays bluetooth symbol (21) which indicates that bluetooth is connected.
- If any error occurs during the course of pairing process, then meter console will not display bluetooth symbol. Repeat the above steps and keep your smartphone closer to the vehicle to reconnect.



(21) Bluetooth symbol

Autopairing

Your vehicle is equipped with autopairing feature by which if you turn “OFF” vehicle’s ignition switch after successful pairing with Hero App, it will reconnect automatically once ignition switch is turned “ON”.

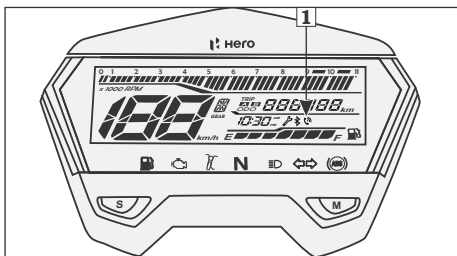
NOTE

- Always keep your smartphone close to your vehicle during the course of pairing, autopairing.**
- Application need to be running in the background.**

Various features of Hero App are as follows:

• Incoming call alert

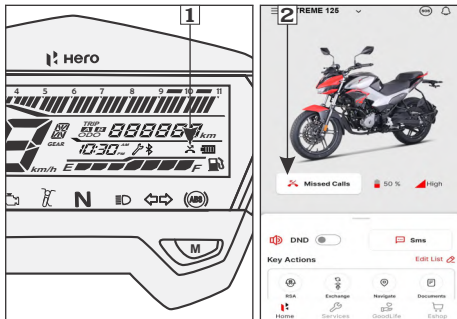
When smartphone is paired with the meter console of your vehicle via bluetooth (**page 28**), then you will get all the incoming calls alerts (1) on the meter console.



(1) Incoming call alert

• Missed call alert

When your smartphone is paired with the meter console of your vehicle via bluetooth (page 28), then you will get all the missed calls alerts (1) on the meter console and in dashboard of Hero App (2) it will show missed call count.

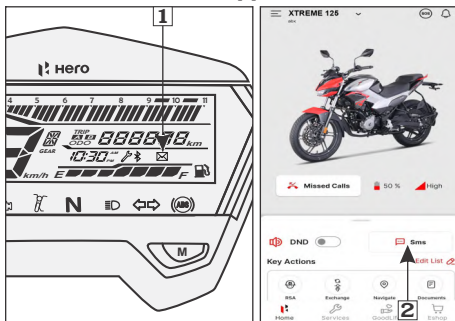


(1) Missed call alert on meter console

(2) Missed call count on Hero App

• Message alert

When your smartphone (android) is paired with the meter console of your vehicle via bluetooth (page 28), then you will get all the message alerts (1) on the meter console and in dashboard of Hero App (2).

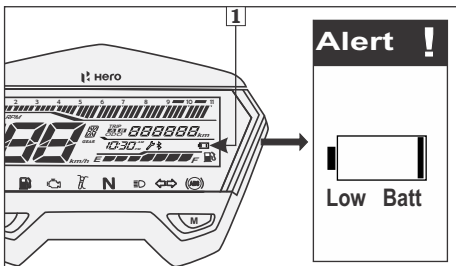


(1) Message alert on meter console

(2) Message alert on Hero App

• Phone battery status

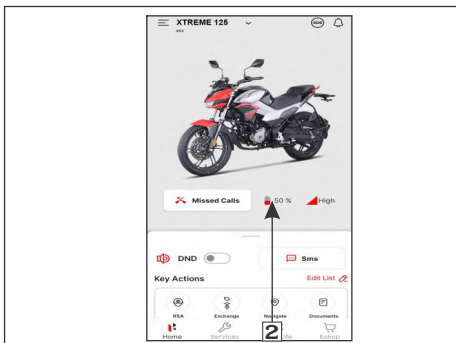
When your smartphone is paired with the meter console of your vehicle via bluetooth (page 28), then it will display phone battery status (1) of your smartphone on the meter console and in dashboard of Hero App (2).



(1) Phone battery status on meter console

In dashboard of Hero App:

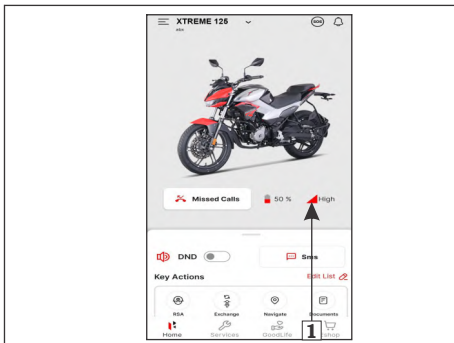
Battery status will display in %.



(2) Phone battery status on Hero App

• Phone network strength

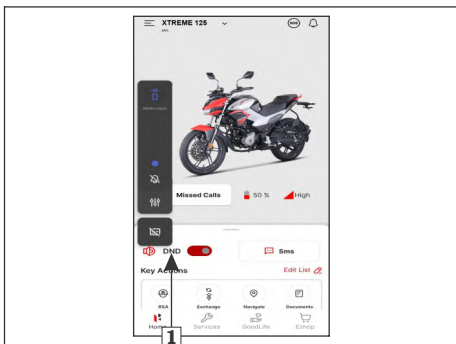
When your smartphone is paired with the meter console of your vehicle via bluetooth (**page 28**), then you will display phone network strength (1) in dashboard of Hero App.



(1) Phone network strength on Hero App

• Do not disturb (DND) mode

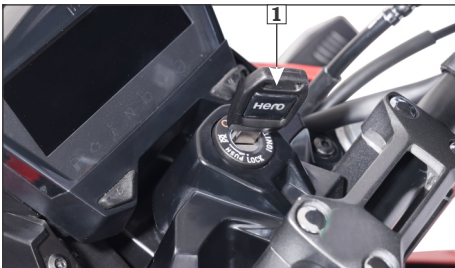
When your smartphone is paired with the meter console of your vehicle via bluetooth (**page 28**), then you can switch “ON” the DND mode (android) (1) in which your smartphone will be on vibrate mode and if you receive any call and SMS will be trigger and sent to the person who is calling stating “**I’m riding bike, Please call me later**”.



(1) DND mode on Hero App

(b) Steering lock

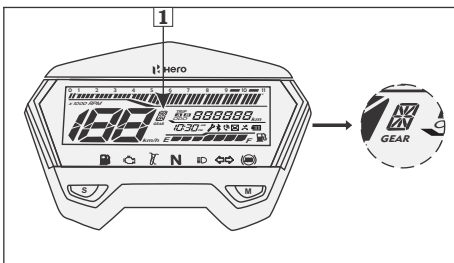
Steering lock is with the ignition switch, turn the key (1) to “OFF” (⊗) position & turn the handle bar towards left or right & push the key downwards & turn towards “Lock” position. After locking take out the key.



(1) Ignition key

(c) Gear indicator

Gear indicator (1) indicates current gear position of your vehicle in which it is running.



(1) Gear indicator



NOTE

- Gear indicator displays “N” when your vehicle is in neutral.
- Gear indicator displays “-” when it delays in displaying the gear indication or when you change gears in vehicle static condition (vehicle is in main stand and ignition switch is in “ON” position).

HANDLEBAR SWITCHES CONTROL

Left handlebar controls

1. Headlamp dimmer switch

The headlamp operates only when the engine is running or when passing switch is operated. Press the switch (1) upwards for high beam “” downwards for low beam “”.

2. Turn signal lamp switch (◀ ▶)

Shift the turn signal switch (2) sideways for right/left indications and leave it to come back to its normal position on its own.

IMPORTANT : To switch “OFF” the turn signal after completing the turn, gently push the switch inside.

3. Horn switch (🔊)

Press the switch to operate the horn (3).

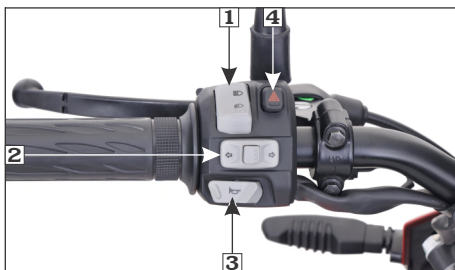
4. Hazard switch (⚠)

(For ABS variant)

Press the hazard switch (4) in ignition “ON” condition whenever your vehicle becomes a temporary hazard for other road users and it is necessary to park the vehicle due to breakdown or other unavoidable problems.

Upon pressing the hazard switch, all turn signal lamps start flashing simultaneously to warn other road users behind you of a hazard or obstruction ahead.

To turn “OFF” the indicator lamps in hazard switch “ON” condition, press the hazard switch again.



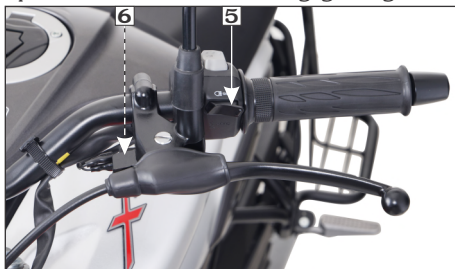
(1) Headlamp dimmer switch (2) Turn signal switch (3) Horn switch (4) Hazard switch

5. Passing switch

Gives an indication for passing ahead. Press passing lamp switch (5) to operate the passing lamp.

6. Clutch switch

There is a clutch switch (6) provided for the safety of the rider. The vehicle cannot be started by electric starter switch until the clutch lever is operated when the vehicle is engaged in gear.



(5) Passing switch (6) Clutch switch



NOTE

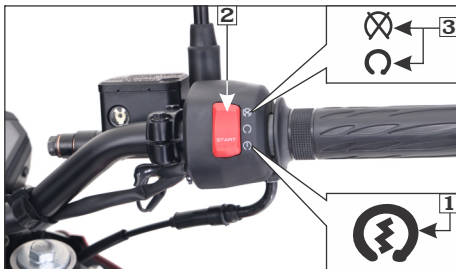
Use hazard lights only when your vehicle becomes a temporary hazard for other road users.

Right handlebar controls

1. Integrated start-kill switch

(a) Electric starter operation (Ⓜ)

Press the electric starter (Ⓜ) (1) of integrated start-kill switch (2) downwards to start the vehicle. Ensure the electric starter operation is done when the vehicle transmission is in neutral. If the vehicle is engaged in gear, press the clutch lever before electric starter (Ⓜ) operation. Release switch after the engine has started.



- (1) Electric starter
- (2) Integrated start-kill switch
- (3) Engine stop (ON/OFF)

! CAUTION

Never hold electric starter (Ⓜ) of integrated start-kill switch continuously more than 5 seconds as continuous cranking of engine will discharge the battery.

(b) Engine stop switch operation

For engine stop operation (3) integrated start-kill switch (2) has two positions. In “ON” (Ⓞ) position, engine will operate and in “OFF” (ⓧ) position, engine will not operate. The prime function of it is to stop the engine during emergency (Vehicle tip over, throttle cable stuck etc.). The switch should normally remain in “ON” (Ⓞ) position. During emergency, put the switch to “OFF” (ⓧ) position.

! WARNING

While riding the vehicle in normal condition, do not press the “Integrated start-kill switch to “OFF” (ⓧ) position to avoid any damage (Wheel locking leading to accident, part damage, battery discharge etc.).

2. i3s switch (For IBS variant)

There is an i3s switch (1) provided to enable the rider for turning i3s mode “ON” or “OFF” based on the traffic conditions.



(1) i3s switch

i3s (IDLE STOP START SYSTEM)

(For IBS variant)

Starting & Warm up the engine:

Turn the ignition key to “ON” (O) position.

The i3s indicator (1) will glow on the speedometer console for 2 seconds and turn “OFF”. For the activation of i3s system, start the engine and let it idle till the engine gets warmed up or temperature reaches more than 75°C.



(1) i3s indicator

Initial activation of the i3s system:

Keep the i3s switch (2) to “ON” position. Turn the ignition key to “ON” position. The i3s indicator on the speedometer console will glow for 2 seconds and turn “OFF”.



(2) i3s switch

Start the vehicle (in neutral and clutch lever released condition) with less than 2000 r/min and let it idle till engine temperature reaches more than 75°C. The engine will cut-off in 30 seconds. After the first stop start, every subsequent stop will be in 5 seconds.

In this condition, the engine can be restarted either with clutch lever, kick or electric start.

Driving with i3s switch in “ON” position:

While driving, if the engine is kept idling (while waiting in a traffic signal), the engine will cut-off in 5 seconds. (The vehicle should be in stand still condition, with neutral gear position at less than 2000 r/min with clutch lever/throttle is in released position and engine is warmed up). The i3s indicator will be continuously blinking in the speedometer indicating that vehicle stopped in i3s condition. By pressing the clutch lever, the engine will start again and gear can be engaged to move the vehicle.



NOTE

- If vehicle stops in i3s condition and kept idle for more than 500 secs (ignition switch is “ON” position) i3s function will be deactivated and cannot be started by pressing the clutch lever, rider can only start the vehicle with electric or kick start.
- If engine is stopped by any means other than i3s function, i3s indicator will not glow/blink in the speedometer. In this condition, vehicle will not start by pressing the clutch lever. Vehicle can be started by using kick or electric start.
- If all the required i3s conditions are met, i3s indicator will glow for 5 secs before the engine cuts-off.

Driving with i3s switch in “OFF” position:

While driving in a traffic jam/or very dense traffic where the vehicle has to encounter a stop and go situation, the i3s switch can be changed to “OFF” position. Once this is done, the i3s system will not work and the vehicle will be in normal operating conditions as other vehicles and no special functions will be performed.



NOTE

- The i3s system will not function if rider puts the i3s switch to “OFF” position.
- If the battery voltage is low and engine r/min is less than 2000, there will be 3 continuous blinks after every 6 secs.
- If the low battery voltage is detected while the ignition key is in “ON” position or engine is in running condition, the i3s function will be deactivated or may not function properly until the rider turns the ignition switch to “OFF” (⊗) position and then back to “ON” (⊙) position.
- If the vehicle is driven without battery or with the dead battery and the engine r/min is less than 2000. The i3s indicator on the speedometer will blink continuously at every 1.5 secs.
- If the vehicle has fallen down, i3s function may not work properly. Before restarting the engine you must turn the ignition switch to “OFF” (⊗) position and then back to “ON” (⊙) position.
- If the battery is in healthy condition and the i3s system does not work properly, it is recommended to visit your Authorised Hero MotoCorp workshop.
- i3s system will not function properly if the vehicle battery is low/dead or driven without battery.
- If vehicle diagnoses with any problem in electronic control unit (ECU) the i3s function will not work.

ABS INDICATOR

(ABS variant)

The ABS indicator (1) on speedometer come “ON” for approx 1.8 seconds when the ignition switch is turned “ON” (⊙) & then keeps blinking until the vehicle attains a speed of 5 km/h.

When the system functions normally indicator goes “OFF” (ABS) once vehicle speed exceeds 5 km/h.

At any point if ABS indicator remains “ON” then ABS is not working, but the brakes still work normally. Reduce your vehicle speed and visit your Authorised Hero MotoCorp workshop.



(1) ABS indicator

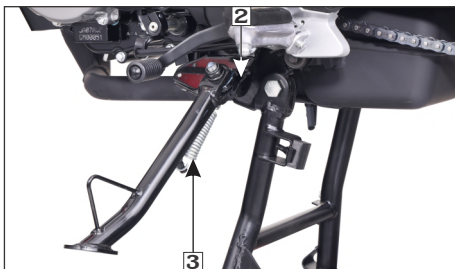
SIDE STAND INDICATOR/SWITCH

For the safety of the customer a side stand indicator (1) is provided.

A side stand switch (2) is provided in the side stand, when the side stand is down (ignition switch “ON” (⊙)), the switch enables the side stand indicator lamp to glow on the speedometer panel.



(1) Side stand indicator



(2) Side stand switch (3) Side stand spring

- Check the side stand for proper function and the spring (3) for damage or loss of tension and the side stand assembly for free movement.
- Check whether the side stand indicator (1) glows when the side stand is down.
- While the side stand is up, the side stand indicator (1) should not glow.
- If the side stand indicator (1) does not operate as described in above steps, please visit your Authorised Hero MotoCorp workshop.

! CAUTION

Ensure that adequate care should be taken while cleaning the side stand switch.

Your vehicle is equipped with “Side stand engine kill” feature for safety purpose.

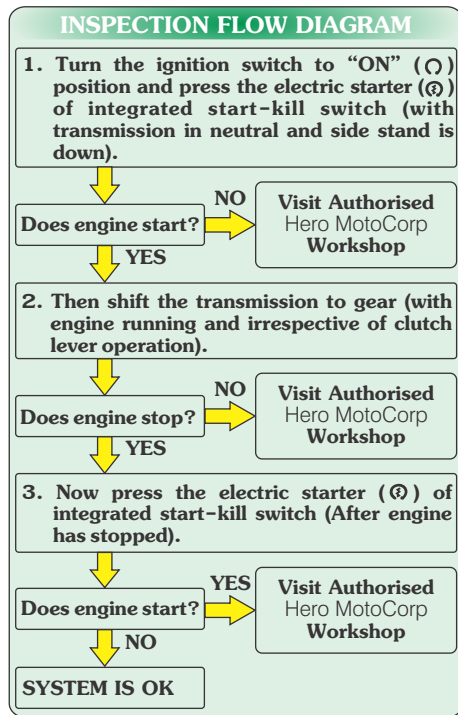
This feature has following functions:

- It prevents starting the engine when transmission is in gear (irrespective of clutch lever operation) and side stand is down.
- It stops the running engine when transmission is in gear (irrespective of clutch lever operation) and side stand is moved down.

! WARNING

“Side stand engine kill” system is not affected by clutch lever operation.

To inspect the functionality of this feature, park the vehicle on its main stand and check all the conditions described in the inspection flow diagram:



If your vehicle doesn't operate as described in flow diagram, please visit your Authorised Hero MotoCorp workshop.

⚠ WARNING

Regularly inspect the functionality of "Side stand engine kill" feature and in case of any malfunction visit Authorised Hero MotoCorp workshop.

FUEL

(a) Fuel tank

Fuel tank capacity is **10 litres** (Be sure to fill the fuel tank when low fuel indicator glows).

- To unlock fuel tank cap, lift the key hole cover (1), insert key (2) turn it clockwise and lift open the cap (3).



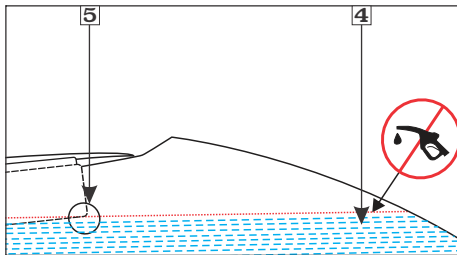
(1) Key hole cover

(2) Ignition key



(3) Fuel tank cap

- Do not overfill the tank. There should be no fuel (4) in filler neck (5). Fill the tank with fuel as shown.



(4) Fuel

(5) Filler neck

- To lock fuel tank cap, close the cap back on the opening and press gently. The key springs back to the normal position and cap gets locked.
- Remove the key and put back the keyhole cover.

! CAUTION


Do not park the vehicle under direct sunlight as it causes evaporation of petrol due to heat and deterioration of paint gloss due to ultra violet rays.

! WARNING

Petrol is extremely flammable and is explosive under certain conditions. Refill in a well ventilated area with the engine stopped. Do not smoke or allow flames or sparks in the area where the vehicle is refilled or where petrol is stored.

(b) Petrol containing alcohol

Fuel available at your location may contain ethanol. Ethanol is a form of alcohol and is generally mixed with petrol to reduce emissions.

 sticker on fuel tank cover indicates that the vehicle parts are compliant up to the blend of “20% ethanol with petrol”.

It is recommended not to use petrol containing more than 20% of ethanol to avoid any damage to engine and other parts of the vehicle.

If you observe any problem related to the operational performance of the vehicle, contact your Authorized Hero MotoCorp workshop.



(1) E20 sticker

(2) Fuel tank cover

! CAUTION

Please ensure the vehicle is not used with low fuel indicator glowing continuously. It will not only result in the vehicle running out of fuel, it may also cause serious damage to the fuel pump. Please ensure fuel is filled up as soon as the low fuel indicator starts glowing.

! WARNING

- **Petrol is highly flammable and explosive. You can be burned or seriously injured when handling fuel.**
- **Stop the engine and keep heat, sparks and flame away.**
- **Refuel only outdoors.**
- **Wipe off spills immediately.**

SEAT LOCK

Location : On the left side of the rear cowl, below the rear grip.

Operation: Insert the ignition key (1) into the seat lock (2) and turn the key in clockwise direction and remove the pillion seat (3) from the rear by pulling it upward.

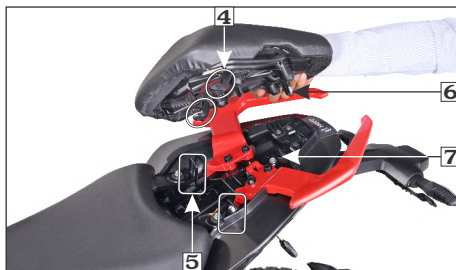


- (1) Ignition key
- (2) Seat lock
- (3) Pillion seat

SEAT

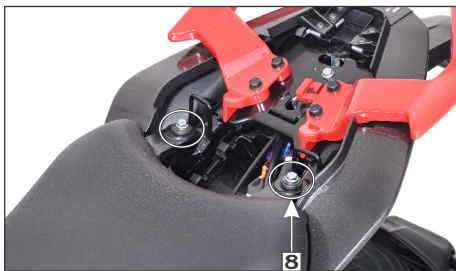
Removal

- Unlock the pillion seat (**page 44**).
- Remove the pillion seat while releasing the tabs (4) from the slots (5) and hook (6) from the seat catch (7).



- (4) Tabs
- (5) Slots
- (6) Hook
- (7) Seat catch

- Remove the rider seat bolts with collars (8).

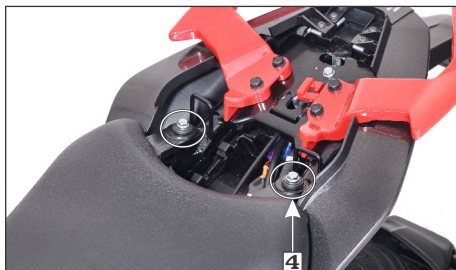


- (8) Bolts with collars

- Release the tabs (9) from slot (10) on the frame and remove the rider seat (11) by pulling it toward rear.



(9) Tabs (10) Slot (11) Rider seat



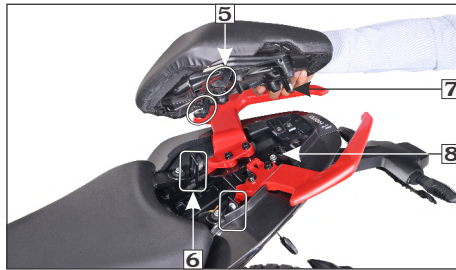
(4) Bolts with collars

Installation

- To install the rider seat (1), align the tabs (2) with the frame slot (3) and press the rider seat to the front side.
- To install the pillion seat, engage the tabs (5) into the slots (6) and hook (7) into the seat catch (8) and press on the top rear side of the pillion seat until the seat gets locked.



(1) Rider seat (2) Tabs (3) Slot

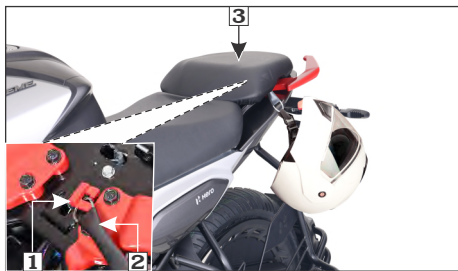


(5) Tabs (6) Slots (7) Hook (8) Seat catch

- Install the rider seat bolts with collars (4).

HELMET HOLDER

The helmet holder is located below the pillion seat. Remove the pillion seat (**page 44**). Hang the helmet on the helmet holder hook (1) using wire helmet set (optional) (2).



- (1) Helmet holder hook
- (2) Wire helmet set (optional)
- (3) Pillion seat

Install the pillion seat (3) (**page 45**) and lock it securely.

WARNING

- *Riding with a helmet attached to the holder can interfere with the rear wheel and could cause a crash in which you can be seriously hurt or killed.*
- *Use the helmet holder only while parked. Do not ride with a helmet secured by the holder.*

USB CHARGER

A USB charger (1) with a cap (2) located on the top bridge (3) near meter console to charge your mobile phone safely while riding. Use of non-standard USB cable may cause damage to the mobile phones.

To connect a mobile phone to the charger, first open the cap from the USB charger and then plug in the charger cable to it. Hero MotoCorp will not be responsible for damages caused due to use of non-standard USB cable.



- (1) USB charger
- (2) Cap
- (3) Top bridge

CAUTION

- *Always place the device in a safe and secure condition to avoid any damage due to road shocks while riding.*
- *Multiple charging of USB devices have to be avoided, simultaneous charging may lead to slow or no charging.*
- *USB port is for charging compatible USB devices.*
- *Do not leave the USB device and USB cable in the vehicle, when the vehicle is parked.*

- Charge your device when the engine is operational/while riding.
- USB charger will not be covered under warranty in case of USB charger cap damage.



NOTE

- Do not apply any soap solution, oil or grease inside the USB charger.
- Any personal belongings have to be removed before water washing to avoid damage.
- Always keep the USB port cap closed after use to prevent dust or water entry during rains/water wash.
- Do not direct water jet towards the port even with cap closed to avoid any short circuit. Always dry the area using a dry cloth or moisture free compressed air before use.
- Press the cap slightly for proper locking of USB charger cap.
- The charging time of mobile may vary, depending on the mobile's battery state of the charge, mobile make and conditions.

PRE- RIDE INSPECTION

You should conduct pre ride inspection before riding the vehicle to enhance riding comfort and safety. Clean your vehicle regularly. It protects the surface finish. Avoid cleaning with products that are not specifically designed for vehicle surfaces. Inspect your vehicle every day before you start the engine. The items listed here will only take a few minutes, and in the long run they can save time, expense, and possibly your life.

Please follow the tips as given below:

- **Engine oil level**–Check and top up engine oil if required (**page 61**). Check for leaks.
- **Malfunction indicator lamp (MIL)**– When the ignition switch is turned “ON” the malfunction indicator lamp (MIL) glows continuously and then should go “OFF” once the engine is started.
- **Fuel level**–Ensure sufficient fuel is available in your fuel tank for your journey (**page 27**). Check for leaks.
- **Low fuel indicator**–Vehicle should not be operated with low fuel indicator glowing continuously (**page 28**).
- **Front brake**–Check for correct brake fluid level in master cylinder /reservoir (**page 73**).
- **ABS indicator (ABS variant)**–Check ABS indicator for proper functioning of ABS (**page 40**).
- **Rear brake**– Check operation. Adjust free play if necessary (**page 75**).
- **Rear brake (IBS variant)**–Check for correct brake fluid level in the reservoir (**page 75**).
- **Tyres**–Check condition and pressure (**page 89**).
- **Clutch**–Check for smooth operation. Adjust free play if necessary (**page 68**).

- **Drive chain**–Check condition and slackness (**page 69**). Lubricate if necessary.
- **Throttle**–Check for smooth opening and closing in all steering positions (**page 69**).
- **Lamps & Horn**–Check that headlamp, position lamps, tail/stop lamp, turn signal lamps, indicators and horn function properly.
- **Rear view mirror**–Ensure that the rear view mirror gives a good rear view when you are sitting on the vehicle.
- **i3s switch (IBS variant)**– Make sure whether the i3s switch is in “ON” or “OFF” position (**page 37**).
- **i3s system (IBS variant)** – Make sure that i3s system is functional properly (**page 38**).
- **Integrated start-kill switch**–Check for proper functionality (**page 37**).
- **Fitting & Fasteners**–Check & tighten if necessary.
- **Steering**–Check for smooth action and for easy maneuverability.
- **Side stand**–Check for proper functionality (**page 40**).

STARTING THE ENGINE

Always follow the proper starting procedure described below :

- To protect the catalytic converter in your vehicle’s exhaust system, avoid extended idling and the use of leaded petrol.
- Your vehicle’s exhaust contains poisonous carbon monoxide gas. High levels of carbon monoxide can collect rapidly in enclosed areas such as garage. Do not run the engine with the garage door closed.

CAUTION

- **Never hold electric starter (Ⓡ) of integrated start-kill switch continuously more than 5 seconds as continuous cranking of engine will discharge the battery.**
- **This vehicle is equipped with a side stand engine kill feature (page 41).**

Preparation

Before starting insert the key and follow the below mentioned procedure :

- Turn the ignition switch (1) to “ON” (Ⓞ) position.
- Confirm that the malfunction indicator lamp (MIL) (2) glows continuously and then should go “OFF” once the engine is started.

NOTE

If MIL remains “ON” even if the vehicle is started, there is an abnormality in the system. It is recommended to reduce the speed and drive to the Authorised Hero MotoCorp workshop for check-up



- (1) Ignition switch**
- (2) Malfunction indicator lamp (MIL)**

- Find neutral position & check neutral N indicator (3) on instrument console with ignition "ON".



- (3) Neutral indicator**

(For ABS variant)

- Make sure that the integrated start-kill switch (4) is at "ON" (⊖) position.



- (4) Integrated start-kill switch**

(For IBS variant)

- Make sure whether the i3s switch (5) is in "ON" or "OFF" position.



- (5) i3s switch**

- **Electric start:** Press the electric starter (Ⓢ) of integrated start-kill switch with fully closed throttle.
- **Kick start:** Depress the kick starter until resistance is felt. Then let the kick starter return to the top of its stroke. Kick from the top of the stroke through to the bottom with a rapid, continuous motion.

Starting procedure

At any ambient temperature, Press the electric starter (Ⓢ) of integrated start-kill switch with the throttle completely closed.



NOTE

This vehicle has a fuel-injected engine with an idle air control valve (IACV).

Flooded engine

If the engine fails to start after repeated attempts, it may be flooded with excess fuel.

- If the engine does not start wait for 15-20 seconds, and try restarting the engine with throttle completely closed.
- If the engine starts with unstable idle, open the throttle slightly.

Ignition cut off

Your vehicle is designed to automatically stop the engine & fuel pump, if vehicle falls down.

(Bank angle sensor cuts off the ignition).



NOTE

If the vehicle has fallen down, before restarting the engine you must turn the ignition switch to "OFF" (ⓧ) position and then back to "ON" (Ⓢ) position.

Running in

Help assure your vehicle's future reliability and performance by paying extra attention to how you ride during the first 500 km.

During this period, avoid full-throttle starts and rapid acceleration.



NOTE

- *To start the engine if any gear is engaged, press the clutch lever and press the integrated start-kill switch.*
- *Do not open the throttle during starting the vehicle.*



WARNING

Never run the engine in a closed area, the exhaust contains poisonous gases.

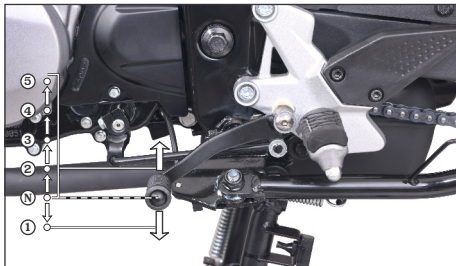
RIDING

- Excessive revving the engine during cold condition can reduce engine life.
- While the engine is idling, press the clutch lever and depress the gearshift pedal downwards using the toe to shift into 1st gear.
- Slowly release the clutch lever and at the same time, gradually increase engine speed by opening the throttle. Coordination of the throttle and clutch lever will assure a smooth positive start.
- When the vehicle attains a moderate speed, close the throttle, press the clutch lever and shift to 2nd gear by placing the toe on the underside of gear pedal and lift upwards.

- This sequence is repeated progressively to shift to 3rd, 4th and 5th gear.

! CAUTION

Do not shift gears without operation of clutch and without closing the throttle otherwise this would lead to damage of gears.



BRAKING

(For ABS variant)

Anti-lock braking system (ABS)

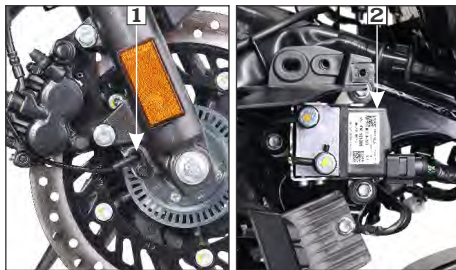
This model is equipped with Anti-lock braking system (ABS) which enhances active safety by helping to prevent the wheels from locking during braking.

ABS is designed to meet two essential requirements during every brake application:

- To help provide vehicle stability.
- To help maintain steering control and maneuverability—on road surfaces.

The ABS system is self-regulating and always active once vehicle speed exceeds 5 km/h.

- The ABS controller acts on the basis of the comparative speeds of the front wheel. The use of non-approved tyres can affect the speed of the wheels and supply incorrect information to the ABS computer.
- The system has a wheel speed sensor (1), hydraulic electronic control unit (HECU) (2), and an ABS indicator lamp (3) on meter console.



(1) Wheel speed sensor
(2) Hydraulic electronic control unit (HECU)



(3) ABS indicator

Whenever you ride your vehicle, Wheel speed sensor monitors the speed of the wheel and sends the input to Hydraulic Electronic control unit (HECU). Then HECU monitors your vehicle and takes control when vehicle speed exceeds 5 km/h.

Now whenever you will apply front brake, ABS will come into picture and based on the input from wheel speed sensor, HECU will modulate the pressure at front caliper thus avoiding wheel to lock and in turn resulting safe stop of the vehicle.

Do's and Dont's

Do's

- Check your brake pads and be sure you have clean brake fluid. ABS systems can also fail due to worn brake pads or air or dirt in brake fluid.

- Use the recommended brake fluid.
- If brake gets wet, apply the brake while riding at low speed to help them dry.
- It is recommended that ABS should be serviced at Authorised Hero MotoCorp workshop.
- Read your owner's manual for additional riding instructions.
- Carefully remove the wheel during the puncture/tyre replacement to prevent the Sensor ring damage/bend.
- Use only the recommended make, type, size of tyre and maintain specified tyre pressure **(page 80)**.
- Keep checking speedometer. In case of ABS malfunction, speed display may go to zero.
- Always maintain sufficient distance from the objects/vehicles ahead, for proper braking and to match riding speed.
- On certain surfaces, such as rough road or gravel road, brake lever may have hard/pulsating feel. Apply full braking on the lever even on the hard or pulsating feel of the lever to get the optimum performance.
- In case of ABS malfunction, the brake system will work as conventional (Non-ABS) brake. Rider is recommended not to apply hard brake to prevent wheel lock and visit Authorised Hero MotoCorp workshop.

Don't's

- Don't panic by mechanical noises or slight lever pulses while applying the brake (whenever ABS actuates) in vehicle. These conditions are normal and indicates that ABS is working.
- Don't apply the hard braking in wet or rainy conditions and while taking a turn.
- Do not adjust the wheel speed sensor air gap yourself.
- Do not attempt to correct the encoder teeth by bending manually or by using any other mode. Do not use a different encoder teeth.
- Do not insert any metallic part near wheel speed sensor.
- Don't try to service HECU or open to separate the parts.
- Don't use the non-genuine spares like pads, discs, tyres etc.



NOTE

- **ABS may get activated without brake application while riding on uneven road surfaces (sharp drop or rise on the road level). This is normal functioning of ABS and won't be having any impact on performance.**
- **ABS may not work if the battery is discharged.**
- **ABS operation is also affected by road conditions, vehicle handling and brake operation. It is the rider's responsibility to ride at reasonable speed and to leave a margin of safety.**
- **ABS consists of an electric motor, from which sound can be heard.**

(For IBS variant)

- For normal braking, close the throttle and gradually apply both front and rear brakes simultaneously while shifting down gears to suit your road speed.
- For maximum deceleration/quick stopping, close the throttle and apply the front and rear brakes simultaneously.

For integrated braking system (IBS)

To stop the vehicle, press the rear brake pedal for the application of front and rear brakes simultaneously. However, for more effective braking, it is advised to apply front and rear brake simultaneously, keeping the throttle in closed position.



WARNING

- **When riding in wet or rainy conditions, or on loose surfaces, apply front brake carefully after applying rear brake to avoid wheel slip.**
- **Extreme braking may cause wheel locking and reduce control over the vehicle.**
- **Wherever possible, reduce speed or apply brake before entering a turn, closing the throttle or braking in mid turn may cause wheel slip. Wheel slip will reduce control over the vehicle.**
- **When riding in wet or rainy conditions, or on loose surfaces the ability to stop the vehicle reduces.**
- **All your actions should be smooth under these conditions. Sudden acceleration, braking or turning may cause loss of control. For your safety, exercise extreme caution when braking, accelerating or turning.**

- **When descending a long steep slope use engine braking (power) by changing to lower gears, with intermittent use of both brakes. Continuous brake application can overheat the brakes and reduce their effectiveness.**

PARKING

After stopping the vehicle, shift the transmission to neutral, turn the ignition switch “OFF” (⊗), park the vehicle on main stand, lock the steering and remove the key.

! CAUTION

- **Park the vehicle on firm level ground to prevent overturning.**
- **While parking on side stand engage the first gear.**

TOOL KIT

The tool kit (1) is located below the pillion seat. Some emergency repairs, minor adjustment and parts replacement can be performed with the tools contained in the kit.



(1) Tool kit

(2) First aid kit

Kit consists of following tool:

- Tool bag-1 No.
- + , - Driver No.2-1 No.
- Grip-1 No.
- Box wrench P16 x 14-1 No.
- Spanner 8-10 mm-1 No.
- Handle pin spanner-1 No.
- Pin spanner-1 No.
- Fuse puller-1 No.
- Allen key 4 mm-1 No.
- Allen key 5 mm-1 No.

FIRST AID KIT

The first aid kit (2) is located under the pillion seat. For some emergency first aid can be performed by medicine contained in the kit.

Kit contains the following items :

- Antiseptic cream-1 No.
- Sterilised dressing-1 No.
- Water proof plaster-1 No.
- Elastic bandage-1 No.
- Gauze (Rolled bandage)-1 No.
- Sterilised elastic plaster-1 No.
- First aid bag-1 No.

CLEANING AND WASHING OF VEHICLE

Follow the below mentioned steps for washing the vehicle.

- Wet the vehicle with light water spray. Avoid directing water meter console, muffler outlets and electrical parts.
- Clean the headlamp lens and other plastic parts using a cloth or sponge dampened with a solution of mild detergent and water.
- Rub the soiled area gently rinsing it frequently with fresh water.
- After cleaning spray water thoroughly.
- Dry the vehicle by wiping with dry soft cloth.



NOTE

- *Our Authorised dealerships take all above mentioned precautions like usage of recommended detergents to ensure quality wash.*
- *While washing the vehicle, it is recommended to take necessary precautions to avoid water entry into muffler.*

These instructions are based on the assumption that the vehicle will be used exclusively for its designed purpose. Sustained high speed operation or operation in unusually wet or dusty conditions will require more frequent service than specified in the maintenance schedule. Consult your Authorised Hero MotoCorp dealer for recommendation applicable to your individual needs and use. If your vehicle overturns or is involved in a crash, be sure that you visit your Authorised Hero MotoCorp workshop for detailed inspections.



WARNING

- *Improperly maintaining this vehicle or failing to correct a problem before you ride can cause a crash in which you can be seriously hurt or killed.*
- *Always follow the inspection and maintenance recommendations and schedules in this owner's manual.*

MAINTENANCE

Importance of maintenance

A well-maintained vehicle is essential for safe economical and trouble-free riding. It will also help reduce pollution.

To help you, take proper care of your vehicle, the following pages include a maintenance schedule and a maintenance record for regular scheduled maintenance.

Maintenance safety

This section includes instructions on some important maintenance tasks. You can perform some of these tasks with the tools provided (if you have basic mechanical skills).

Other tasks that are more difficult and require special tools are best performed by professionals. It is recommended that wheel removal should normally be handled by a Hero MotoCorp authorised workshop.

You will come across some of the most important safety precautions in the following pages of this manual.

However, we cannot warn you of every conceivable hazard that can arise in performing maintenance. Only you can decide whether or not you should perform a given task.



WARNING

- ***Failure to follow maintenance instructions and precautions properly can seriously injure you.***
- ***Always follow the procedures and precautions in this owner's manual.***

SAFETY PRECAUTIONS

- Make sure the engine is “OFF” before you begin any maintenance or repair. This will help to eliminate several potential hazards:
 - **Carbon monoxide poisoning from engine exhaust.**
Be sure there is adequate ventilation whenever you operate the engine.
 - **Burns from hot parts.**
Let the engine and exhaust system cool before touching.
 - **Injury from moving parts.**
Do not run the engine unless instructed to do so.
 - Read the instruction before you begin and make sure you have the tools and skills required.
 - To help prevent the vehicle from falling over, park it on a firm, level surface on the main stand.
 - To reduce the possibility of a fire or explosion, be careful when working around petrol or batteries. Use only nonflammable solvent, not petrol, to clean parts. Keep cigarettes, sparks and flames away from the battery and all fuel-related parts.
- Remember that your Authorised Hero MotoCorp workshop knows your vehicle best and is fully equipped to maintain and repair it.
- To ensure best quality and reliability, it is recommended to use Hero MotoCorp genuine parts for repair and replacement.

MAINTENANCE SCHEDULE

Perform the pre-ride inspection (**page 47**) at each scheduled maintenance period.

**I: INSPECT C: CLEAN R: REPLACE A: ADJUST (If necessary) L: LUBRICATE T: TOP UP
E: EMISSION CHECK**

The following maintenance schedule specifies all maintenance required to keep your vehicle in peak operating condition. Maintenance work should be performed in accordance with standards and specifications of Hero MotoCorp by properly trained and equipped technicians. Your Authorised Hero MotoCorp workshop meets all of these requirements.

Ensure that each paid service is availed within **90 days** or **3000 km** from the date of previous service, whichever is earlier.

🔧 To be serviced by your Authorised Hero MotoCorp workshop unless the owner has the relevant tools, technical information and is technically qualified.

✂ In the interest of safety, we recommend that these jobs are carried out only by your Authorised Hero MotoCorp workshop.

Note-1 : At higher odometer readings, repeat the frequency interval established here.

Note-2 : Replace air cleaner element once in every **15000 km** or early replacement may be required when riding in dusty areas.

Note-3 : Replace engine oil once in every **6000 km**. Top up once in every **3000 km**.

Note-4 : Visit Authorised Hero MotoCorp workshop for inspection, cleaning, lubrication and adjustment of drive chain at every **1000 km**. The maximum allowable adjustment of the drive chain adjusters is equal to four spacing in the slot at the front of the axle. Beyond this point or **20000 km** whichever comes earlier, the chain kit needs to be replaced.

Note-5 : Replace brake fluid once in a every **2 years** or **30000 km**, whichever is earlier.

Note-6 : Inspect & maintain specified torque.

Note-7 : Inspect the bearings free play, replace if necessary.

Note-8 : Replace front fork oil once in a every **2 years** or **30000 km**, whichever is earlier.

Note-9 : Inspect for any play in the rear suspension mounting bushes, replace if necessary.

Note-10 : Check CO emission at idle.

Note-11 : Inspect the canister hoses for deterioration, damage or loose connections and canister for cracks or other damages.

Note:

- Always wipe the water from the vehicle after washing. Use clean soft cloth or pressurized air for completely drying the water.
- Always replace gaskets, O-rings, circlips and cotter pins with new one once removed.














or Scan QR code

MAINTENANCE SCHEDULE

Dear Customer,

We would strongly recommend the following schedule, to keep your vehicle in perfect running condition and healthy environment. Vehicle subjected to severe use or ridden in dusty area will require more frequent servicing.

| ITEMS | WHICHEVER COMES FIRST | DURING FREE SERVICE PERIOD | | | | | AFTER FREE SERVICE ONCE IN EVERY | | | | | | |
|----------------------------|-----------------------|--|-----------------|-----------------|-----------------|-----------------|-------------------------------------|---|---|--|--|------|------|
| | SERVICE | 1 st | 2 nd | 3 rd | 4 th | 5 th | | | | | | | |
| | DAYS | 1st 60 | Next 100 | Next 100 | Next 100 | Next 100 | | | | | | | |
| | KM Note-1 | 500-750 | 3000-3500 | 6000-6500 | 9000-9500 | 12000-12500 | | | | | | 3000 | 6000 |
| Fuel Line | | I | I | I | I | I | I | | | | | | |
| Throttle Operation | | I, A | I, A | I, A | I, A | I, A | I, A | | | | | | |
| Air Cleaner Element | Note-2 | Do not open air cleaner element unless there is a drivability problem | | | | | | | | | | | R |
| Spark Plug | | I, C, A | I, C, A | I, C, A | I, C, A | R | I, C, A | | | | | R | |
| Valve Clearance | | I, A | I, A | I, A | I, A | I, A | I, A | | | | | | |
| Engine Oil | Note-3 | R | I, T | R | I, T | R | I, T | R | | | | | |
| Engine Oil Strainer Screen | | C | | | | | C | | | | | C | |
| Engine Oil Paper Filter | | I | | I | | | R | | I | | | R | |
| Electric Starter | | I | I | I | I | I | I | | | | | | |
| Oil Circulation | | I | I | I | I | I | I | | | | | | |
| Drive Chain | Note-4 | I,C,L,A at every 1000 km | | | | | I,C,L,A at every 1000 km | | | | | | |
| Drive Chain Slider | | | I | I | I | I | I | | | | | | |
| Battery Voltage | | I | I | I | I | I | I | | | | | | |
| Brake Shoe | | I, A | I, A | I, A | I, A | I, A | I, A | | | | | | |

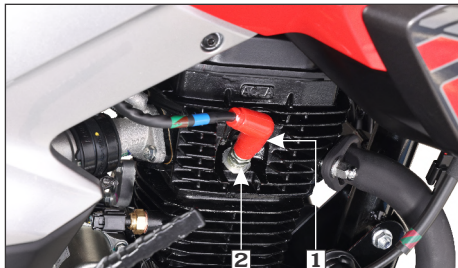
| ITEMS | WHICHEVER COMES FIRST | DURING FREE SERVICE PERIOD | | | | | AFTER FREE SERVICE ONCE IN EVERY | | | | | | |
|---|--|----------------------------|-----------------|-----------------|-----------------|-----------------|----------------------------------|------|------|------|---------|-----------------|--|
| | | SERVICE | 1 st | 2 nd | 3 rd | 4 th | | | | | | 5 th | |
| | | DAYS | 1st 60 | Next 100 | Next 100 | Next 100 | Next 100 | | | | | | |
| | | KM Note-1 | 500-750 | 3000-3500 | 6000-6500 | 9000-9500 | 12000-12500 | 3000 | 6000 | 9000 | 12000 | 15000 | |
| | Disc Wear/Pad Wear | | I | I | I | I | I | I | | | | | |
| | Brake Fluid | Note-5 | I, T | I, T | I, T | I, T | I, T | I, T | | | | | |
|  | Brake System (Brake Cam & Brake Pedal) | | | C, L | | C, L | | | C, L | | | | |
|  | Stop Lamp Switch | | I, A | I, A | I, A | I, A | I, A | I, A | | | | | |
|  | Headlamp Focus | | I, A | I, A | I, A | I, A | I, A | I, A | | | | | |
| | Clutch Lever Free Play | | I, A | I, A | I, A | I, A | I, A | I, A | | | | | |
| | Side Stand Pivot Bolt | | C, L | C, L | C, L | C, L | C, L | C, L | | | | | |
| | Side Stand/Main Stand | | L | L | L | L | L | L | | | | | |
| | Side Stand Switch | | I, C | I, C | I, C | I, C | I, C | I, C | | | | | |
| | i3s System (For IBS variant) | | I | I | I | I | I | I | | | | | |
|  | Nut, Bolts & Fasteners | Note-6 | I | I | I | I | I | I | | | | | |
|  | Wheel Bearings | Note-7 | I | I | I | I | I | I | | | | | |
|  | Wheels/Tyres | | I | I | I | I | I | I | | | | | |
|  | Steering Head Bearing | | I | I, A | I | I, A | I, L, A | I | I, A | | I, L, A | | |
|  | Front Suspension/Oil leakage | Note-8 | I | I | I | I | I | I | | | | | |
|  | Rear Suspension | Note-9 | I | I | I | I | I | I | | | | | |
|  | Muffler (Catalytic Converter) | Note-10 | | | I, E | | I, E | | I, E | | | | |
|  | Evaporative Emission Control System | Note-11 | I | I | I | I | I | I | | | | | |

SPARK PLUG INSPECTION

Recommended spark plugs: P-RG6HCC (Federal Mogul)

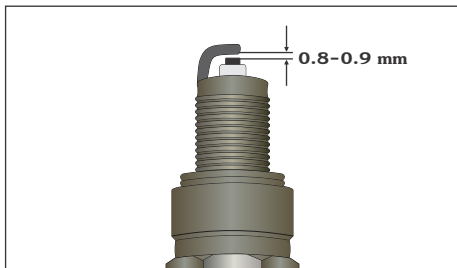
For most riding conditions this spark plug heat range number is satisfactory. However, if the vehicle is going to be operated for extended periods at high speeds or near maximum power in hot climates, the spark plug should be changed to a cold heat range number, consult Authorised Hero MotoCorp workshop on this if required.

- Clean any dirt around the spark plug base.
- Disconnect the noise suppressor cap (1) and remove the spark plug (2) with the help of spark plug box wrench provided in the tool bag.



(1) Noise suppressor cap (2) Spark plug

- Visually inspect the spark plug electrodes for wear. The center electrode should have square edges and the side electrode should not be eroded. Discard the spark plug if there is apparent wear or if the insulator is cracked or chipped.



- Make sure that the spark plug gap is **0.8-0.9 mm** using a wire-type feeler gauge. If adjustment is necessary, bend the side electrode carefully. Make sure the plug washer is in good conditions.
- With the plug washer attached, thread the spark plug in by hand to prevent cross-threading.
- Tighten a new spark plug 1/2 turn with spark plug wrench to compress the washer. If you are reusing a plug, it should only take 1/8-1/4 turn after the plug seats.

! CAUTION

- *Do not remove the spark plug and test for spark on the vehicle by cranking the engine as this could lead to fire or explosion*
- *Install a dummy spark plug in the cylinder head and test for spark.*
- *Never use a spark plug with improper heat range.*
- *Always use resistor type spark plug.*

ENGINE OIL

Use hero genuine engine oil or recommended grade oil.

BRAND: Hero 4T plus

GRADE: SAE 10W 30 SL Grade

(JASO MA2).

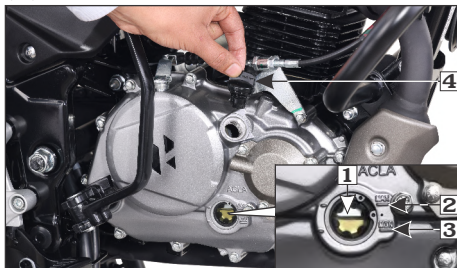
Manufactured by:

- Tide Water Oil Co. (India) Ltd.
- Savita Oil Technologies Limited.
- Bharat Petroleum Corporation Limited.

**OIL CAPACITY: 1.2 litres (disassembly)
: 1.0 litre (at oil change)**

Engine oil level inspection/Top up process

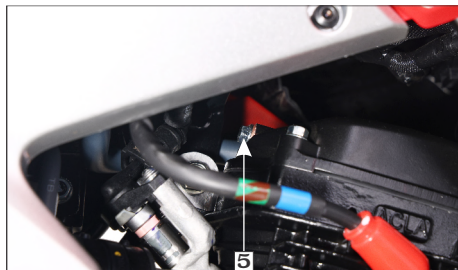
Check engine oil level each day before operating the vehicle. The oil level window (1) is on the right crankcase cover for measuring oil level. Oil level must be maintained between the MAX (2) and MIN (3) level marks.



- | | |
|----------------------|--------------------|
| (1) Oil level window | (2) MAX level mark |
| (3) MIN level mark | (4) Oil filler cap |

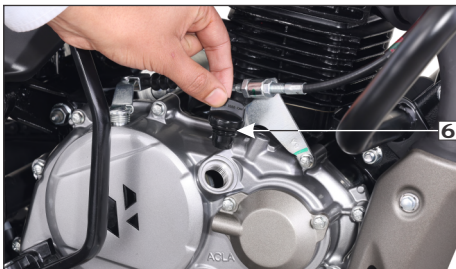
Do top up if oil level reaches towards the MIN level mark.

- Park the vehicle on its main stand.
- Start the engine & let it idle for 3-5 minutes.
- Slightly loosen the engine oil check bolt (5) and check the engine oil entry into the cylinder head cover.



(5) Engine oil check bolt

- After checking the oil circulation, tighten the engine oil check bolt.
- Stop the engine and wait for 2-3 minutes.
- Check the oil level in the oil level window.
- If required, add the specified oil up to the MAX level mark. Do not overfill.
- Reinstall oil filler cap with new O-ring (6) and check for oil leaks.

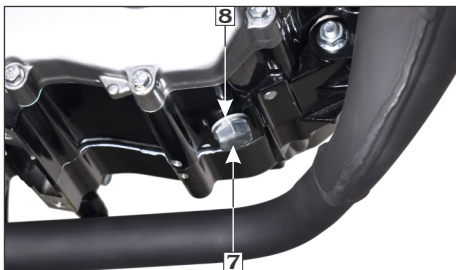


(6) O-ring

Engine oil replacement process /

Oil circulation inspection

- Start the engine, warm it up for several minutes and then turn it off.
- Wait a few minutes until the oil settles down.
- To drain the oil, remove the oil filler cap, drain bolt (7) and sealing washer (8).



(7) Drain bolt

(8) Sealing washer

- After the oil is completely drained, reinstall the drain bolt (7) with a new sealing washer (8).
- Fill the crankcase through the oil filler hole with 1.0 litre (approximately) of the recommended grade oil as the right crankcase cover is not removed.
- Reinstall the oil level filler cap with a new O-ring.
- Start the engine and allow it to idle for few minutes.
- Stop the engine and let the engine oil settle down.
- Recheck the oil level.
- Make sure that oil level is at the “MAX” level mark of the oil level window with the vehicle in an upright position and that there are no oil leaks.

! CAUTION

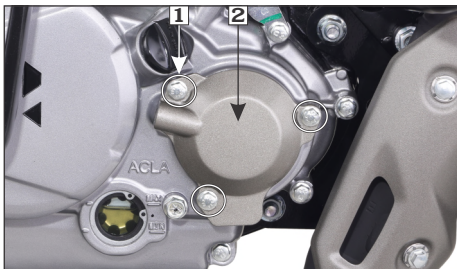
- *Running the engine with insufficient oil can cause serious engine damage.*
- *Running the engine with excessive oil can cause spark plug fouling & loss in performance.*
- *Engine oil is a major factor affecting the performance and service life of the engine. Non-detergent, vegetable or castor based racing oils are not recommended.*

ENGINE OIL FILTER ELEMENT

NOTE

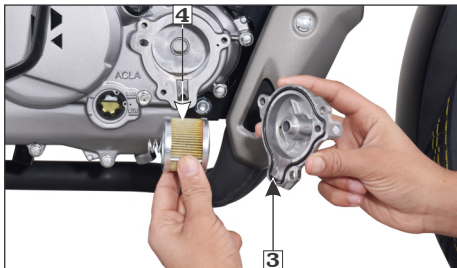
Drain the engine oil thoroughly (page 62) in case of engine oil filter element replacement.

- Remove the three mounting bolts (1).
- Remove the engine oil filter element cover (2) with O-ring (3).



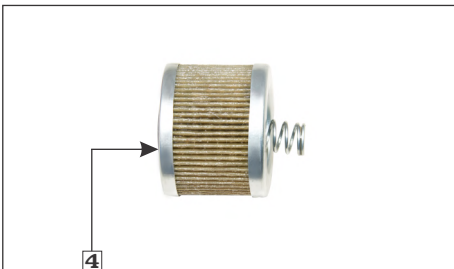
- (1) Mounting bolts
(2) Engine oil filter element cover

- Remove the engine oil filter element (4) from the cover.



- (3) O-ring (4) Engine oil filter element

- Replace the engine oil filter element (4).



- (4) Engine oil filter element



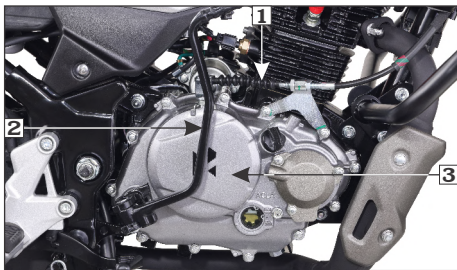
NOTE

- *When the engine oil filter element replaced always replace the O-ring with the new one.*
- *Make sure that O-ring is properly seated.*
- *Apply engine oil on engine oil filter element before installation.*
- *Inspect and replace engine oil filter element as specified in the maintenance schedule.*

- Installation is in the reverse order of removal.

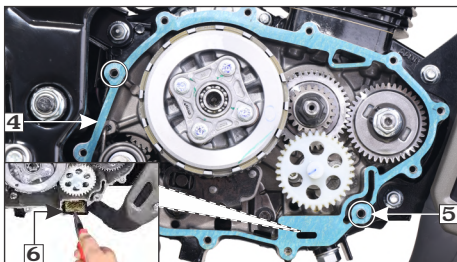
OIL FILTER SCREEN

- Drain the engine oil thoroughly (page 62).
- Disconnect the clutch cable (1).
- Remove the kick starter pedal (2) and right crankcase cover (3).



- (1) Clutch cable
- (2) Kick starter pedal
- (3) Right crankcase cover

- Remove the gasket (4) and dowel pins (5).
- Remove the oil filter screen (6) and wash it in clean non flammable or high flash point solvent (kerosene).



- (4) Gasket
- (5) Dowel pins
- (6) Oil filter screen

- Reinstall the oil filter screen with the sharp edged side facing inwards.
- Reinstall the dowel pins, new gasket, crankcase cover, kick starter pedal and clutch cable.
- Adjust the clutch cable free play, if required (**page 68**).
- Fill the crankcase with clean engine oil as per specification.



NOTE

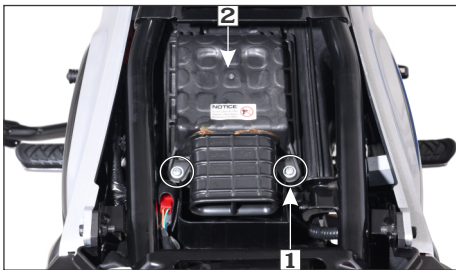
Ensure to replace gasket with new one once removed.

AIR CLEANER

Air cleaner element inspection

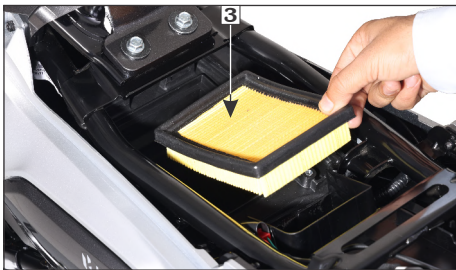
The air cleaner is wet, paper pleated type filter which has enhances filtering efficiency. The air cleaner should be replaced at regular intervals (**page 57**). When riding in dusty areas, more frequent replacement may be necessary.

- Remove the seat (**page 44**).
- Remove the air cleaner cover screws (1) and the cover (2).



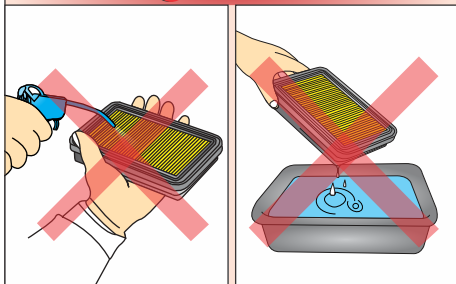
(1) Air cleaner cover screws **(2) Cover**

- Remove the air cleaner element (3).



(3) Air cleaner element

! CAUTION



- **Never wash or clean the wet, paper pleated type filter. Replace filter element once in every 15000 km.**
- **Replace it earlier if it becomes very dirty, damage on surface or on the sealing area.**



NOTE

Align the tabs of air cleaner cover before installing screws & the cover.

- Clean the air cleaner housing using a shop towel.
- Install the new air cleaner element.
- Install the air cleaner element cover.
- Install the seat **(page 45)**.

Air cleaner drain tube plug cleaning

Remove the drain tube (1) and drain the deposit into a container.

Follow the above process more frequently when riding in rain or at full throttle.



(1) Drain tube

VALVE CLEARANCE ADJUSTMENT

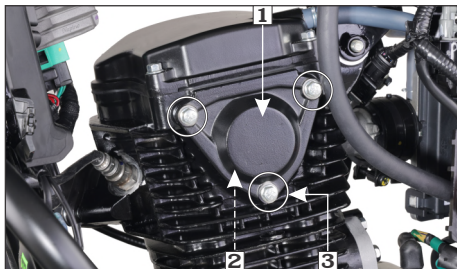
Excessive valve clearance will cause noise, and little or no clearance will prevent the valve from closing and cause valve damage and power loss. Check valve clearance at the specified intervals (page 57).



NOTE

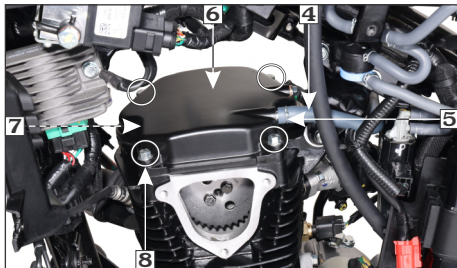
The checking or adjusting of valve clearance should be performed while the engine is cold. The clearance will change as the engine temperature rises.

- Remove the fuel tank cover.
- Remove the cylinder head left side cover (1) with its gasket (2) by removing bolts (3).



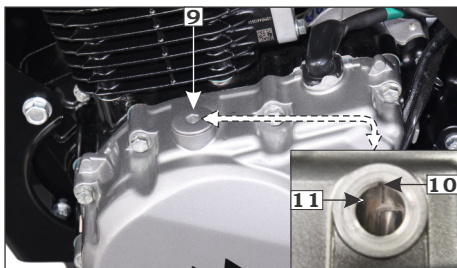
- (1) Cylinder head left side cover
- (2) Cylinder head left side cover gasket
- (3) Cylinder head left side cover bolts

- Remove the engine breather pipe (4) by removing the clip (5).
- Remove the cylinder head cover (6) with its gasket (7) by removing the cylinder head cover bolts (8).



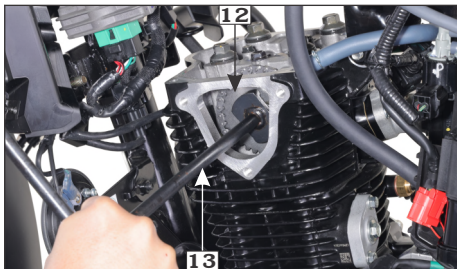
- (4) Engine breather pipe
- (5) Clip
- (6) Cylinder head cover (7) Gasket (8) Bolts

- Remove the timing hole cap with O-ring (9). Rotate the cam sprocket (12) clockwise using the special tool (13) until the 'T' mark (10) on the flywheel coincides with the index mark (11) on the left crankcase cover. In this position, the piston will be on the compression stroke.



(9) Timing hole cap
(11) Index mark

(10) 'T' mark



(12) Cam sprocket

(13) Special tool

The adjustment must be made when the piston is at top dead center and both the inlet and exhaust valves are closed.

This condition can be determined by moving the rocker arms. If they are free, it is an indication that the valves are closed and the piston is in compression stroke. If they are tight, the valves are open, rotate the cam sprocket 360° clockwise and realign the 'T' mark with the index mark.

- Check the clearance by inserting the feeler gauge (14) between the adjusting screw (15) and valve stem (16).

Standard clearance (cold condition)

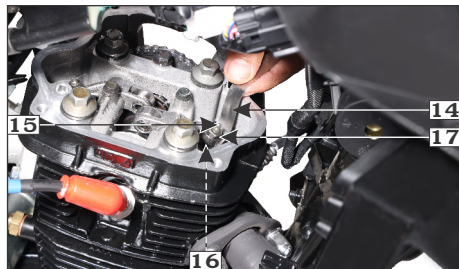
Intake : 0.08 mm±0.02 mm

Exhaust : 0.12 mm±0.02 mm



NOTE

Before inserting the feeler gauge, smear a bit of engine oil on the feeler gauge to avoid damage to the feeler gauge.



(14) Feeler gauge
(16) Valve stem

(15) Adjusting screw
(17) Lock nut

- Adjust by loosening the lock nut (17) and turning the adjusting screw until there is a slight drag on the feeler gauge.
- After tightening the lock nut, check again the clearance.
- Install all parts in the reverse order of disassembly.



NOTE

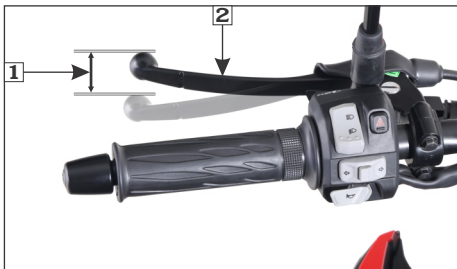
All O-rings and gaskets to be replaced with new ones.

CLUTCH LEVER FREE PLAY

Adjustment

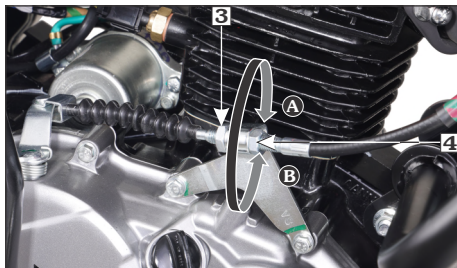
Clutch adjustment may be required if the vehicle stalls when shifting into gear or tends to creep or if the clutch slips, causing acceleration to lag behind engine speed.

Normal clutch lever free play (1) is 10–20 mm at the lever (2).



(1) Free play: 10–20 mm (2) Clutch lever

- To adjust the free play, loosen the lock nut (3). Turn the adjusting nut (4) to obtain the specified free play. Tighten the lock nut and check the adjustment.



**(3) Lock nut (4) Clutch cable adjusting nut
(A) Decrease free play (B) Increase free play**

- Start the engine, press the clutch lever and shift into gear. Make sure the engine does not stall, and vehicle does not creep. Gradually release the clutch lever and open the throttle. The vehicle should start smoothly and accelerate.

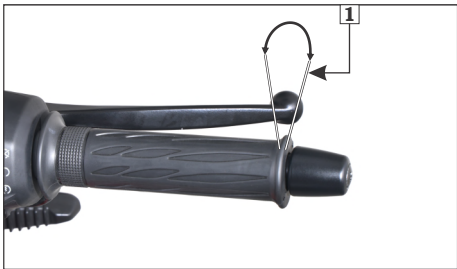
Other checks

- Check the clutch cable for kinks or signs of wear that could cause sticking or failure.
- Check for clutch cable model. Use genuine clutch cables.
- Check for clutch cable routing.

THROTTLE OPERATION

Cable inspection

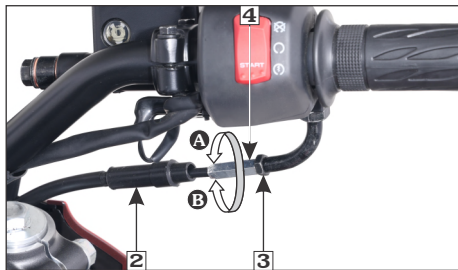
Check for smooth rotation of the throttle grip from the fully open to the fully closed position. Check at full left and full right steering positions. Inspect the condition of the throttle cable from the throttle grip down to the throttle body. If the cable is kinked, chafed or improperly routed, it should be replaced or rerouted. Standard throttle grip free play (1) is approximately 2–6 mm of grip rotation.



(1) Free play 2–6 mm

Free play adjustment

To adjust the free play, slide the boot (2), then loosen the lock nut (4). Turn the adjuster (3) to adjust free play. After adjustment, tighten the lock nut and slide the boot on the adjuster and lock nut securely.



(2) Boot (3) Lock nut (4) Adjuster
(A) Decrease free play (B) Increase free play

DRIVE CHAIN SLACKNESS

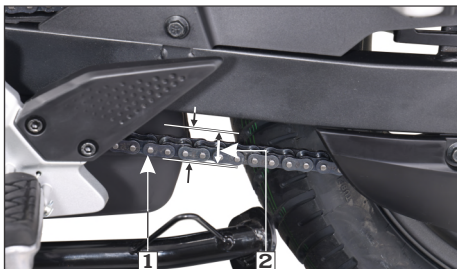
The service life of the drive chain depends upon proper lubrication and adjustment.

Poor maintenance can cause premature wear or damage to the drive chain and sprockets.

The drive chain (1) should be checked and lubricated as part of the pre-ride inspection (page 47). Under severe usage, or when the vehicle is ridden in unusually dusty areas, more frequent maintenance will be necessary.

Inspection

- Turn the engine “OFF”, park the vehicle on its main stand and shift the transmission to neutral.
- Drive chain slack (2) should be checked in the lower run midway between the sprockets. Move the drive chain up and down by hand and chain slack should be adjusted to 20–25 mm vertical movement by hand.



- (1) Drive chain
 (2) Drive chain slack: 20-25 mm

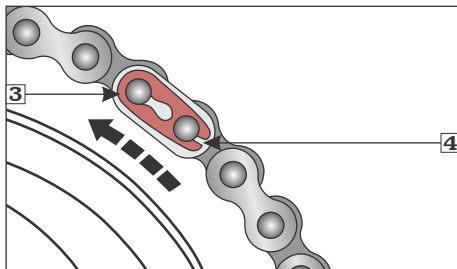
- Rotate the wheel and check the drive chain slack. Repeat this procedure several times. Drive chain slack should remain constant (20-25 mm). If the chain is slack only in certain sections, some links are kinked or binding. Binding and kinking can be eliminated by frequent lubrication.



NOTE

Drive chain slack should be adjusted at your Authorised Hero MotoCorp workshop as per the specification.

- Turn the chain to view chain lock plate (3). Ensure that the chain lock plate open end (4) is installed in the opposite direction of the chain rotation.
- Rotate the rear wheel slowly and inspect the drive chain and sprockets for any of the following conditions.



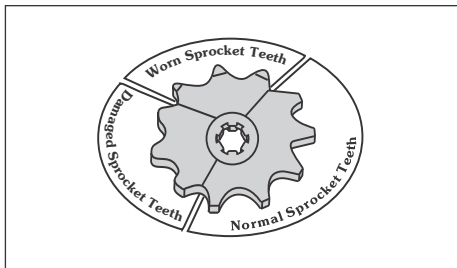
- (3) Chain lock plate (4) Open end

Drive chain

- Damaged rollers
- Loose pins
- Dry or rusted links
- Kinked or binding links
- Excessive wear
- Improper adjustment
- Damaged or missing O-rings

Sprockets

- Excessively worn teeth.
 - Broken or damaged teeth.
 - If the drive chain has damaged rollers, loose links or missing O-rings, replace it. If the chain is dry or rusted, it should be lubricated.
- Lubricate the chain if the links are kinked or binding. If the problem is not solved after lubrication, replace the chain.
- If the drive chain or sprockets are excessively worn or damaged, they should be replaced.



! CAUTION

Always replace the drive chain and sprockets as a set. Otherwise the new part will wear prematurely.

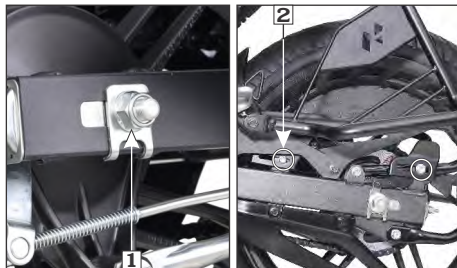
Adjustment

Drive chain slack should be checked and adjusted, if necessary at every 1 000 km.

When operated at sustained high speeds or under conditions of frequent rapid acceleration, the chain may require more frequent adjustments.

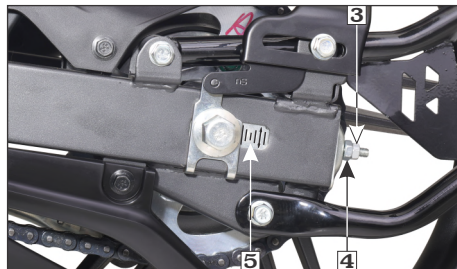
If the drive chain requires adjustment, follow the procedures below:

- Park the vehicle on its main stand with the transmission in neutral and the ignition switch in “OFF” position.
- Loosen the rear axle nut (1) along with loosening the wheel cover bolts (2).



(1) Rear axle nut (2) Wheel cover bolts

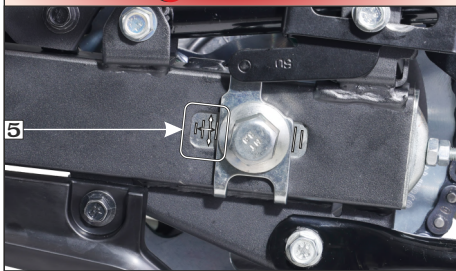
- Loosen the drive chain lock nut (3) from both side.
- Turn the adjusting nuts (4) to match equal spacing index marks (5) both the side until the correct drive chain slack is obtained. Turn the adjusting nut clockwise to decrease the slack or anticlockwise to increase the slack of the chain.



**(3) Drive chain lock nut
(4) Drive chain adjusting nut
(5) Index marks**

- Secure the position of the adjusting nut (4) by tightening the lock nut (3) against it.
- Tighten the rear axle nut.
Torque: 6.0–8.0 kgf-m
- Check the drive chain slack again.
- Tighten the drive chain lock nut (4)

! CAUTION



- *The maximum allowable adjustment of the drive chain at adjusters is equal to 4 spacing index marks (5) visible at front side of the axle.*
- *For safety please ensure no further adjustment to be done beyond this point and chain kit needs to be replaced.*

! WARNING

If a torque wrench is not used for installation, see your Authorised Hero MotoCorp workshop as soon as possible to check for proper assembly.

Cleaning and Lubrication

Lubricate every 1000 km or sooner if the chain appears dry.

- Turn the engine off, park the vehicle on its main stand and shift the transmission into neutral. Open side stand to facilitate cleaning.
- Spray a commercially available chain cleaner for cleaning the drive chain over its entire length.

NOTE

Ensure that the chain cleaner and lubricant used is the one recommended for use on an O-ring chain, otherwise the O-rings may deteriorate, fail and lose their sealing properties.

- Rotate the rear wheel backwards to expose the next section of the drive chain and repeat second step until all of the drive chain is cleaned.
- Let the spray dry for about five minutes.
- To remove stubborn dirt, scrub the rollers and side plates with soft nylon brush.
- Apply SAE 90 grade oil on the hanger side of the entire length of the chain using an oil can.
- Wait for 7–10 minutes for penetration of lubricant inside the bush and roller wipe the excessive lubricant from the chain and near by parts using a clean rag.



NOTE

Excessive lubricant if not wiped off, will aid in accumulation of dust, sand and dirt on the drive chain, increasing its wear and will also be sprayed on the vehicle as well due to chain movement.



CAUTION

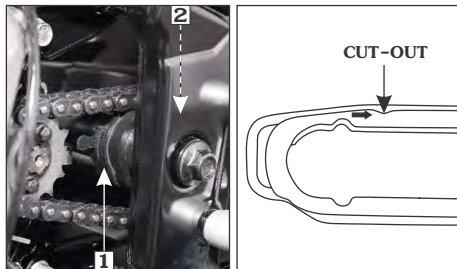
- Steam cleaning, high pressure washers and certain solvents can damage the drive chain O-rings.
- While lubricating and cleaning hold the rear wheel with one hand to prevent the possibility of your finger being trapped between the chain and sprocket.
- Clean and lubricate the chain, whenever possible, after riding the vehicle under rain or in terrain with excessive dust, mud or sand.
- The drive chain is fitted with O-rings between the link plates. These O-rings retain grease inside the chain to improve its service life. However, special precautions must be taken when adjusting, lubricating, washing and replacing the chain.
- If the chain is excessively dirty, it should be removed and cleaned before lubrication. For your own safety, we recommend that service be performed by an Authorised Hero MotoCorp workshop.

DRIVE CHAIN SLIDER INSPECTION

(Refer to “Maintenance Schedule” on **(page 57)**.)

Check the drive chain slider (1) for wear, the chain slider must be replaced if it is worn to the bottom of the cutout or wear limit (2) is

reached. For replacement, visit your Authorised Hero MotoCorp workshop.



(1) Drive chain slider

(2) Wear limit

BRAKES

Brakes (integrated braking system)

Brakes are items of personal safety and should always be maintained with proper adjustments. When one applies the Integrated/Rear brake pedal, front & rear brakes activate jointly.

(a) Front brake inspection

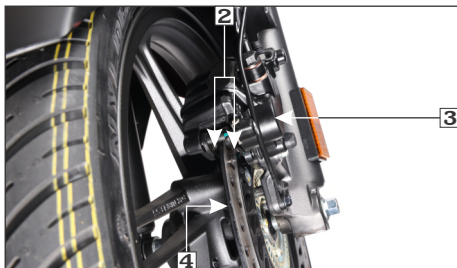
Master Cylinder/Reservoir.

Location: Right handlebar.

Brake fluid recommended: DoT 3 or DoT 4
 Fluid level-Ensure that the brake fluid level does not fall below “MIN” mark (1) on the master cylinder, when checked with the master cylinder parallel to the ground. The level decreases gradually due to piston movement to compensate pad wear. If the level decreases abruptly, check for leakage in the brake system and contact your Authorised Hero MotoCorp workshop.



(1) "MIN" mark



(2) Brake pads (3) Caliper (4) Disc



NOTE

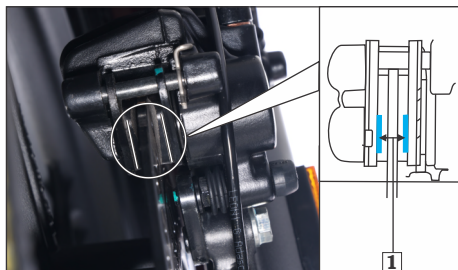
- Clean the dirt and mud accumulation between the brake pads (2), caliper (3) and the disc (4) by using a water jet.
- Always contact your Authorised Hero MotoCorp workshop for refilling of master cylinder when necessary. Do not mix DoT 3 and DoT 4 brake fluid.

(b) Brake pad wear

Brake pad wear depends upon the severity of usage, the type of riding & road conditions. Generally, the pads will wear faster on wet & dirty roads. Inspect the pads at each regular maintenance interval.

Inspection

- Check the brake pads for wear by examining the wear indicator groove (1) on each pad.
- If either pad is worn to the bottom of the grooves replace both pads as a set. Visit your Authorised Hero MotoCorp workshop for this service.



(1) Wear indicator groove



WARNING

Always apply front and rear brakes simultaneously to avoid skidding of vehicle.

(c) Rear brake fluid (For IBS variant)

Refer to the safety precautions on (page 56).

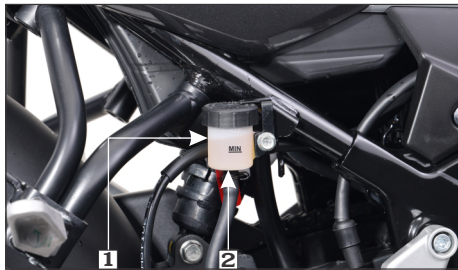
Reservoir (1)

Location : Near pillion footrest.

Brake fluid recommended:

DoT-3 or DoT-4.

Fluid level - Ensure that the brake fluid level does not fall below "MIN" mark (2) on the reservoir parallel to the ground. The level decreases gradually due to piston movement to compensate pad wear. If the level decreases abruptly, check for the leakages in the brake system and consult your Authorised Hero MotoCorp workshop.



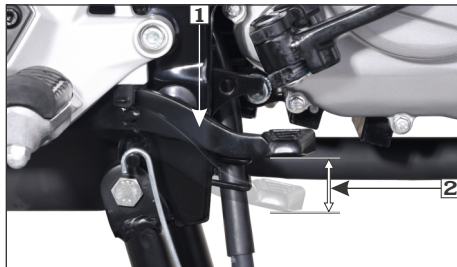
(1) Reservoir

(2) "MIN" mark

(d) Rear brake inspection

Adjustment

- Park the vehicle on its main stand.
- Measure the brake pedal (1) free play before the brake starts to take hold. Free play (2) should be 20-30 mm.

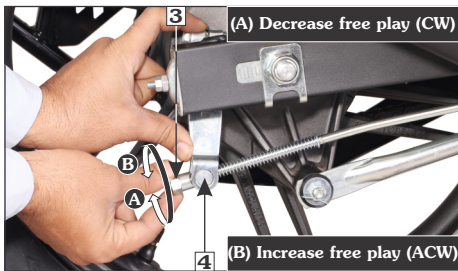


(1) Rear brake pedal

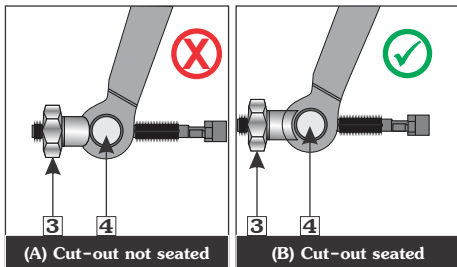
(2) Free play: 20-30 mm

- If adjustment is necessary, turn the rear brake adjusting nut (3).
- Make sure that the cut-out on the adjusting nut is seated on the brake joint pin (4) after the final adjustment has been made.
- Apply the brake several times and check for free wheel rotation when released.

CW- Clockwise, ACW- Anticlockwise



(3) Adjusting nut (4) Brake joint pin



(3) Adjusting nut (4) Brake joint pin



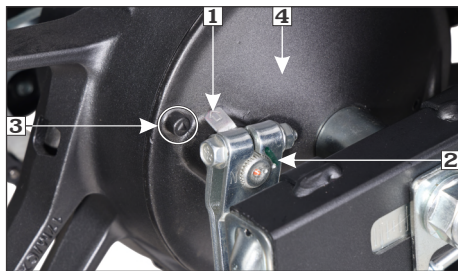
NOTE

If proper adjustment cannot be obtained by this method, visit your Authorised Hero MotoCorp workshop.

(e) Brake wear indicators

When the brake is applied, an arrow (1), fixed to the brake arm (2), moves towards a reference mark (3) on the brake panel (4). If the arrow aligns with the reference mark on full application of the brake, the brake shoes must be replaced.

Rear brake wear indication



(1) Arrow (2) Brake arm
(3) Reference mark (4) Brake panel

SUSPENSION

Front and rear suspension inspection

- Check the front forks by locking the front brake and pumping the front fork up and down vigorously. The suspension action should be smooth and there should be no oil leakage.
- Check the rear monoshock absorber by pushing hard downwards on rear grip while the vehicle is not parked on stand. The suspension action should be smooth and there should be no oil leakage.



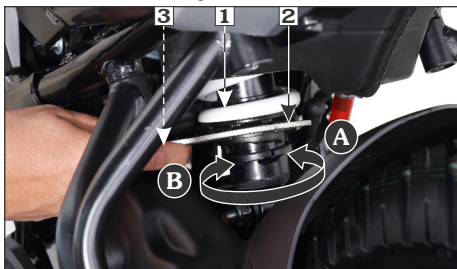
Rear monoshock absorber adjustment

Rear shock absorber adjustment can be made in any position from 1st to 7th according to the load/road conditions or owner's requirement.

Recommend adjustment

Solo rider : 3rd position

Rider + Pillion: 7th position



- (1) Rear monoshock absorber
 (2) Pin spanner (3) Pin spanner handle
 (A) Softer (B) Stiffer

- In direction A: Softer
- In direction B: Stiffer

NOTE

To adjust the rear monoshock absorber (1), use the rear shock absorber adjustment tool [Pin spanner (2) with handle (3)] available in the tool kit.

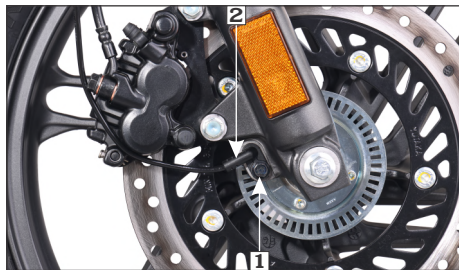
WHEEL

(a) Front wheel

Removal

Refer to the safety precautions on (page 56).

- Support the vehicle securely on the main stand and raise the front wheel off the ground.
- Remove the wheel speed sensor bolt (1) from right fork leg and disconnect the wheel speed sensor cable (2) (ABS variant).



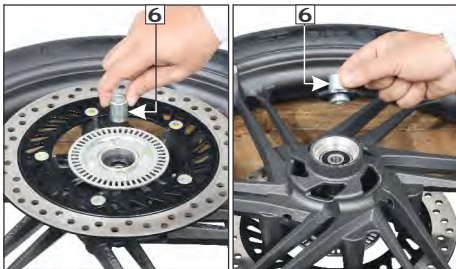
- (1) Wheel speed sensor bolt
 (2) Wheel speed sensor cable

- Remove the front axle nut (3), remove the axle (4) and wheel (5).



(3) Axle nut (4) Axle (5) Wheel

- Remove the side collars (6) from both sides from the wheel.



(6) Side collars

! CAUTION

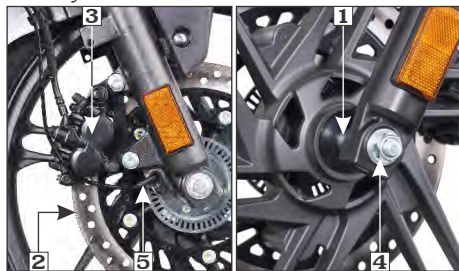
Do not operate front brake lever when the wheel is removed.

Installation

- Install the side collars (1) to both sides of the wheel hub.
- Insert the disc (2) between the pads in the caliper assembly (3). When installing the wheel, carefully fit the brake disc between the brake pads to avoid damage to the pads.
- Tighten the front axle nut (4) to the specified torque.

TORQUE : 5.5–6.5 kgf-m

- Install the wheel speed sensor (5) (ABS variant).
- After installing the wheel apply the brake several times and then check if the wheel rotates freely. Recheck the wheel if the brake drags or if the wheel does not rotate freely.

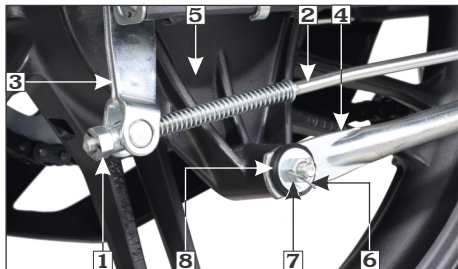


(1) Side collar (2) Disc (3) Caliper
(4) Front axle nut (5) Wheel speed sensor

(b) Rear wheel

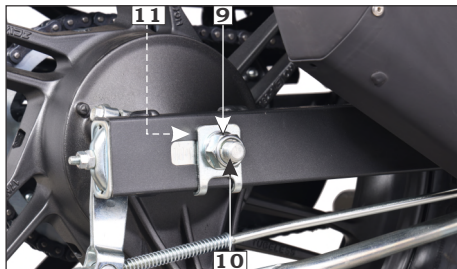
Removal

- Support the vehicle securely on the main stand and raise the rear wheel off the ground.
- Remove the wheel cover and rear hugger fender.
- Remove the rear brake adjusting nut (1) and disconnect the brake rod (2) from the brake arm (3) by pushing down the brake pedal. Disconnect the brake stopper arm (4) from the brake panel (5) by removing split pin (6), lock nut (7) and washer (8).



- (1) Rear brake adjusting nut (2) Brake rod
(3) Brake arm (4) Brake stopper arm
(5) Brake panel (6) Split pin (7) Lock nut
(8) Washer

- Remove the rear axle nut (9).
- Pull out the axle (10) and collar (11).
- Remove the wheel.



- (9) Axle nut (10) Axle (11) Collar

Installation

- Reverse the removal procedure.
- **Axle nut torque: 6.0–8.0 kgf-m**
- Adjust the rear brake free play (**page 75**) and drive chain slackness (**page 69**).
- After installing the wheel, apply the brake several times and check for free wheel rotation when released.

! CAUTION

Always replace used split pins with new ones.

MAIN/SIDE STAND LUBRICATION

- Park the vehicle on the level surface.
- Check the main/side stand return spring for damage or loss of tension.
- Check the main stand (1)/side stand (2) for freedom of movement.
- Lubricate the side stand pivot if necessary.
- Make sure the side/main stand is not bent.



(1) Main stand

(2) Side stand

TUBELESS TYRES

The tyres fitted on your vehicles are of TUBELESS type.

To safely operate your vehicle, your tyres must be of the proper type and size, in good condition with adequate tread, and correctly inflated for the load you are carrying.

The following pages give more detailed information on how and when to check the air pressure, how to inspect your tyres for damage, and what to do when your tyres need to be repaired or replaced.



WARNING

- *Using tyres that are excessively worn or improperly inflated can cause a crash in which you can be seriously hurt or killed.*
- *Follow all instructions in this owner's manual regarding tyres inflation and maintenance.*

Air pressure

Keeping your tyres properly inflated provides the best combination of handling, tread life and riding comfort.

Generally, under-inflated tyres wear unevenly, adversely affect handling and are more likely to fail from being overheated.

Under inflated tyres can also cause wheel damage in rocky terrain.

Over-inflated tyres make your vehicle ride harshly, are more prone to damage from road hazards, and wear unevenly.

We recommend that you visually check your tyres before every ride and use a air pressure gauge (1) to measure air pressure at least once a month or any time you think the tyres pressure might be low.



(1) Air pressure gauge

Tubeless tyres have some self-sealing ability if they are punctured. However, because leakage is often very slow, you should look closely for punctures whenever a tyre is not fully inflated. Always check air pressure when your tyres are "cold"—when the vehicle has been parked for at least three hours. If you check air pressure when your tyres are "warm"—when the vehicle has been ridden for even a few km—the readings will be higher than if the tyres were "cold". This is normal, so do not let air out of the tyres to match the recommended cold air pressures given below. If you do, the tyres will be under-inflated.

The recommended "cold" tyre pressures are:

| | Rider only | Rider and Pillion |
|--------------|-------------------|--------------------------|
| Front | 27 psi | 27 psi |
| Rear | 29 psi | 29 psi |

! CAUTION

Over inflation/Under inflation will affect the performance.

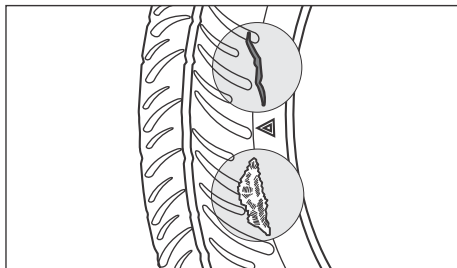
Inspection

Whenever you check the tyre pressure, you should also examine tyre treads & side walls for wear, damage & foreign objects.

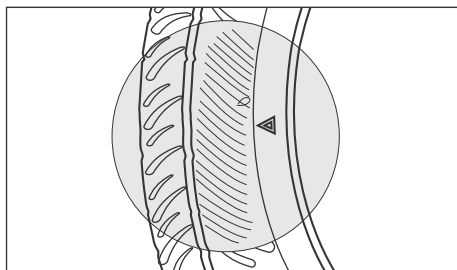
Look for:

- Bumps or bulges in the side of the tyre or the tread. Replace the tyre if you find any bumps or bulges.

- Cuts, splits or cracks in the tyre. Replace the tyre if you can see fabric or cord.



- Excessive tread wear.



- Carefully inspect the tyres for any damage, if the vehicle hits a pothole or hard object.

Tread wear

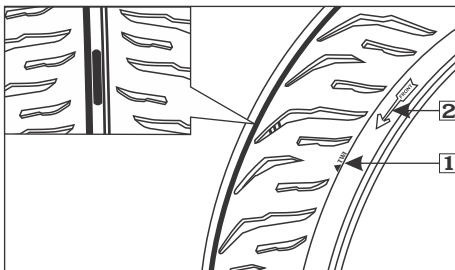
Replace tyres immediately when the wear indicator (1) appears on the tyre. The tread limits are:

MINIMUM TREAD DEPTH:

Front: 1.0 mm

Rear: 1.0 mm

Check the tread wear indicator for tyre wear.



(1) Tread wear indicator

(2) Arrow mark

Unidirectional tyres

Whenever the tyre is removed and put back in case of puncture, ensure the arrow mark (2) on the tyre is in the same direction as that of forward rotation of wheel.

Tyre repair

Repairing a puncture or removing a wheel requires special tools and technical expertise. If a tyre is punctured or damaged, it is advised to visit nearest tyre manufacture, Hero MotoCorp authorised dealer/workshop or the

tyre repair shop who has expertise in repairing methods of tubeless tyre.

A tyre that is repaired either temporarily or permanently, will have lower speed and performance limits than a new tyre. After an emergency repair, always have the tyre inspected/replaced at our authorised dealer and replace the tyre if suggested.

You should not exceed 70 km/hour for the 1st 24 hours or 105 km/hour at any time thereafter. In addition, you may not be able to safely carry as much load as with a new tyre.

If you decide to have a tyre replace be sure the wheel is balanced before you ride.

Tyre replacement

The tyres that were installed on your vehicle were designed to match the performance capabilities of your vehicle and provide the best combination of handling, braking, durability and comfort.

The recommended tyre for your vehicle are:

| | |
|--------------|--------------------------------|
| Front | 90/90 17 49 P (Tubeless tyre) |
| Rear | 120/80 17 61 P (Tubeless tyre) |



NOTE

For repair and replacement of tyre it is advised to visit your Authorised Hero MotoCorp workshop.

⚠ WARNING

- *Operation with excessively worn tyres is hazardous and will adversely affect traction and handling.*
- *Under-inflation may result in the tyre slipping on or tyre coming off the rim.*
- *Always use the size and type of tyres recommended in this owner's manual.*



NOTE

The imported tyre(s) if fitted without ISI mark; are in compliance of BIS standard and Central Motor Vehicle Rules 1989, as declared by the Tyre manufacturer.

Important safety reminders

- Do not install a tube inside a tubeless tyre on this vehicle. Excessive heat buildup can cause the tube to burst.
- Use only tubeless tyres on this vehicle. The rims are designed for tubeless tyres, and during hard acceleration or braking, a tube-type tyre could slip on the rim and cause the tyre to rapidly deflate.

NUTS, BOLTS & FASTENERS

- Tighten bolts and nuts at regular interval shown in the maintenance schedule.
- Check that all chassis nuts and bolts are tightened to correct torque values.
- Check that all cotter pins, safety clips, hose clamps and cable stays are in place.



BATTERY

Refer to the safety precautions on **(page 56)**.

Location

The battery is located behind the left side cover.

Specification

***MF Battery-12V-4 Ah/ETZ5**

It is not necessary to check the battery electrolyte level or add distilled water as the battery is a **Maintenance Free (sealed)** type. If your battery seems weak and electrolyte is leaking (causing hard starting or other electrical troubles), contact your Authorised Hero MotoCorp workshop.

***MF stands for Maintenance Free**



NOTE



This symbol on the battery means that this product must not be treated as household waste.



This symbol on the battery means the old battery must be returned to your Authorised Hero MotoCorp workshop as it must be treated as recyclable material.

- **Battery is a Maintenance-Free (sealed) type and can be permanently damaged if the sealing strip is removed.**
- **An improperly disposed battery can be harmful to the environment and human health. Always confirm local regulations for battery disposal.**

Battery charging

Always visit your Authorised Hero MotoCorp workshop if you see any symptom of battery discharge as earliest as possible to get the battery charged. The battery has a tendency to discharge rapidly if optional electrical accessories are fitted on the vehicle.

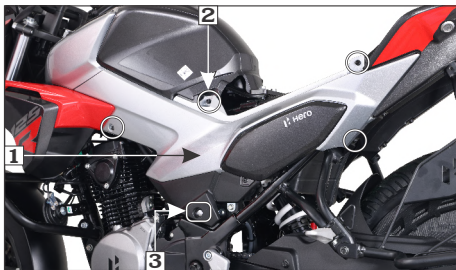
Battery storage

- If in case your vehicle is not used for more than a month remove the battery, fully charge and store in a cool and dry place.
- If the battery is expected to be stored for more than two months, ensure to fully charge the battery once in a month.
- Always ensure the battery is fully charged before installation.

- Ensure the battery leads are properly connected to the battery terminals during installation.

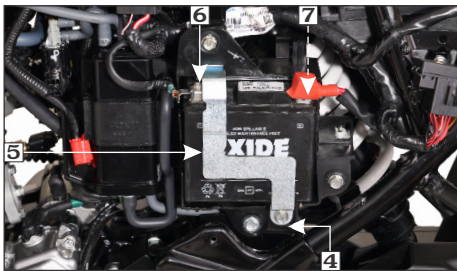
Battery removal

- Make sure the ignition switch is “OFF” (⊘).
- Remove the seat (**pages 44**).
- Remove the left side cover (1) by removing four allen key bolts (2) and screw (3).



- (1) Left side cover
- (2) Allen key bolts
- (3) Screw

- Remove the battery clamp bolt (4) and the battery clamp (5).
- Disconnect the negative (-)ve terminal lead (6) from the battery first, then disconnect the positive (+)ve terminal lead (7).



(4) Battery clamp bolt (5) Battery clamp
(6) (-)ve terminal (7) (+)ve terminal

- Pullout the battery (8) from the battery box.



(8) Battery

Battery installation

- Reinstall in the reverse order of removal. Be sure to connect the positive (+)ve terminal first, then the negative (-)ve terminal.
- Check all fasteners are secured properly.

FUSE REPLACEMENT

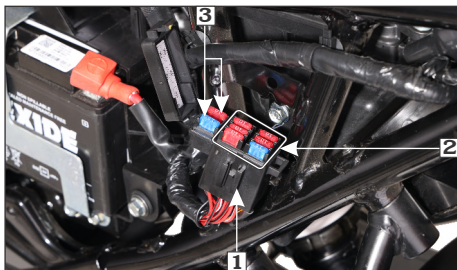
Fuse box (1): Location: Mounted behind the left side cover.

Fuse type: Blade fuse

(For ABS variant)

Circuit fuse (2) : 15A, 10Ax5

Spare fuse (3) : 15A, 10A

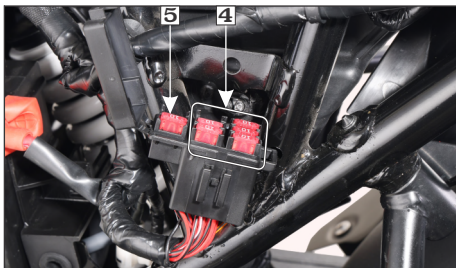


(1) Fuse box
(2) Circuit fuse: 15A, 10Ax5
(3) Spare fuse: 15A & 10A

(For IBS variant)

Circuit fuse (4) : 10Ax5

Spare fuse (5) : 10A



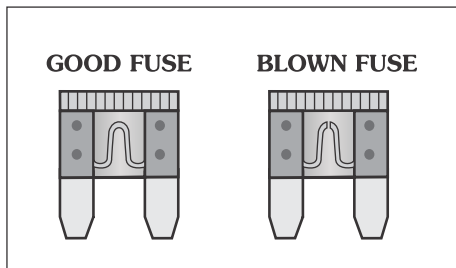
- (4) Circuit fuse: 10Ax5
 (5) Spare fuse: 10A

⚠ WARNING

- **Never use a fuse with a different rating from that specified. It may lead to serious damage to the electrical system or a fire due to short circuit.**
- **Battery gives off explosive gases. Keep sparks, flames & cigarettes away.**

! CAUTION

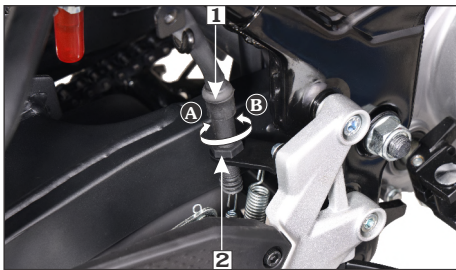
- **Do not attempt to start or ride the vehicle without a charged battery, it can cause a permanent damage to certain electrical components.**
- **Turn the ignition switch "OFF" before checking or replacing the fuse to prevent accidental short-circuiting.**



STOP LAMP SWITCH

The stop lamp switch (1) must be adjusted so that stop lamp glows when rear brake is applied. The procedure for adjusting stop lamp is as follows :

- Turn the ignition switch to the "ON" (O) position.
- Turn the adjusting nut (2) to position stop lamp switch at a point where the stop lamp glows once the brake pedal is depressed. Turn the adjusting nut in direction (A) to advance switch timing or in direction (B) to retard switch timing.



(1) Stop lamp switch

(A) Advance

(2) Adjusting nut

(B) Retard

HEADLAMP FOCUS ADJUSTMENT

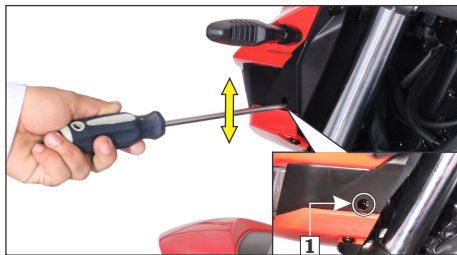
Headlamp is preset. However in case of adjustment required, please follow the steps as given below:

- Park the vehicle on its main stand on level ground.
- Turn the ignition switch to “ON” position (Ⓞ) and start the engine.
- Adjust the headlamp beam vertically by loosening the screw (1) and move the headlamp up or down for correct focus.



WARNING

An improperly adjust headlamp may blind oncoming rider/driver or it may fail to light the road for a safe distance.



(1) Headlamp adjusting screw

CATALYTIC CONVERTER

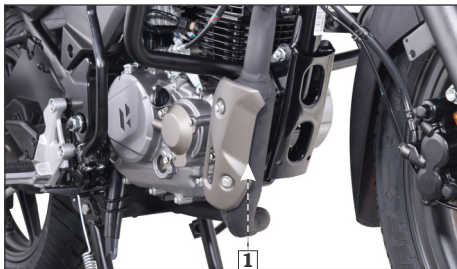
This vehicle is equipped with a catalytic converter (1) in the muffler to meet the emission norms.

The catalytic converter contains precious metals that serve as catalysts, promoting chemical reactions to convert the exhaust gasses without affecting the metals. The catalytic converter acts on HC, CO and NOx. The catalytic converter must operate at a high temperature for the chemical reactions to take place. It can set on fire any combustible material that come near it. Park your vehicle away from high grasses, dry leaves, or other flammable material.

A defective catalytic converter contributes to air pollution and can impair your engine's performance.

Follow these guidelines to protect your vehicle's catalytic converter.

- Always use unleaded petrol. Even a small amount of leaded petrol can contaminate the catalyst metals, making the catalytic converter ineffective.
- Keep the engine in good running condition. A poorly running engine can cause the catalytic converter to overheat.
- If your engine is misfiring, backfiring, stalling, or otherwise not running properly, stop riding and turn "OFF" the engine. Have your vehicle serviced as soon as possible.



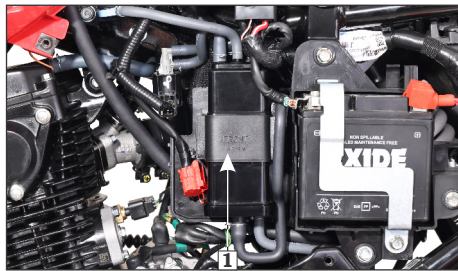
(1) Catalytic converters

! CAUTION

Avoid keeping any cloth or flammable object between or around hot parts (such as muffler, engine).

EVAPORATIVE EMISSION CONTROL SYSTEM

This vehicle is equipped with an evaporative emission control system to meet emission standards. During warm weather, the petrol vapours which contain HC evaporates easily into the atmosphere from the fuel tank, if the fuel system is unsealed or open. The evaporative emission control system is used to prevent petrol vapours from escaping into the atmosphere from fuel tank. The canister (1) collects the fuel vapour from the fuel tank and then the fuel vapour is drawn into the engine for re-burning to avoid pollution caused by the fuel vapour diffused into the air.



(1) Canister

POLISHING OF VEHICLE

After washing your vehicle, wax all painted surfaces (except matte painted surfaces) using a commercially available polish/quality liquid or paste wax to finish the job. Use only a non abrasive polish or wax made specifically for automobiles. Apply the polish or wax according to the instructions on the container.



NOTE

Polishing or waxing is not applicable for models having matte paint.

BASIC TROUBLESHOOTING

1. STARTING TROUBLE - ENGINE DOES NOT START

A. Integrated Start-Kill Switch (ABS variant)



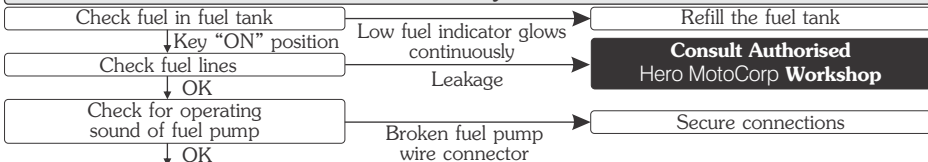
Consult Authorised Hero MotoCorp Workshop

B. Side Stand Engine Kill System



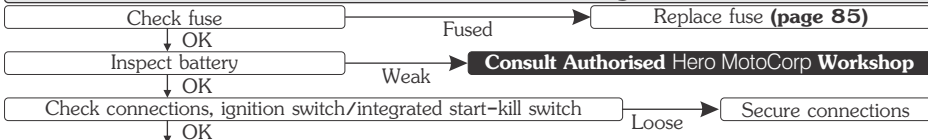
Consult Authorised Hero MotoCorp Workshop

C. Fuel System



Consult Authorised Hero MotoCorp Workshop

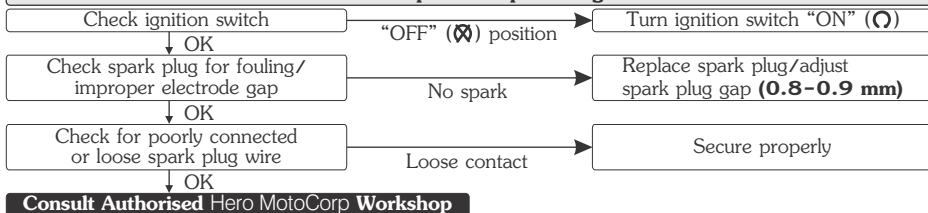
D. Electric Starter Not Working



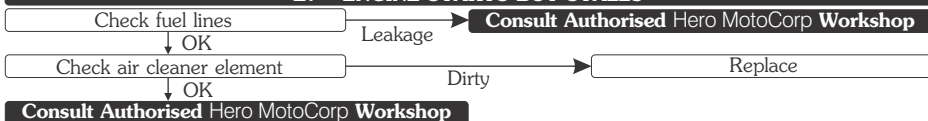
Consult Authorised Hero MotoCorp Workshop

BASIC TROUBLESHOOTING

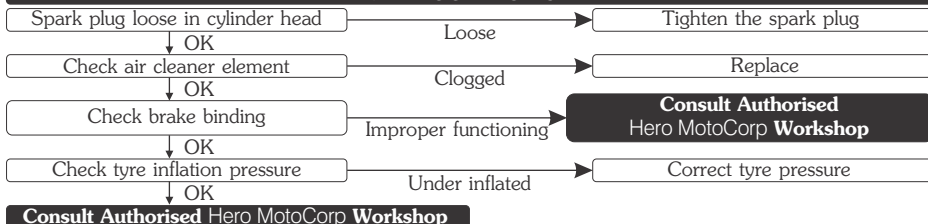
E. No Spark At Spark Plug



2. ENGINE STARTS BUT STALLS



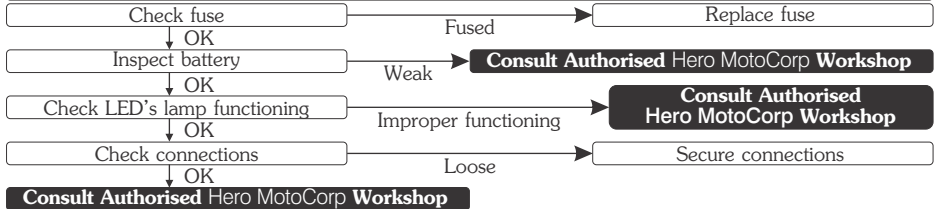
3. POOR PICK UP



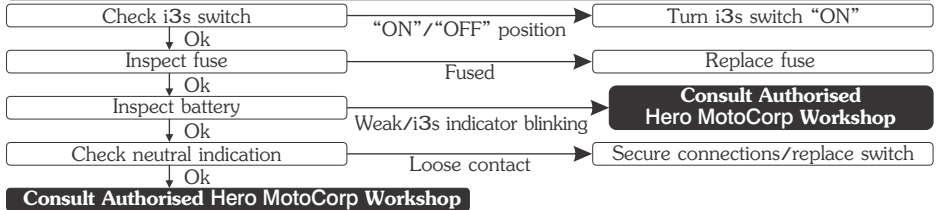
BASIC TROUBLESHOOTING

4. ELECTRICAL SYSTEM

Feeble Horn Sound or No Light



5. i3s SYSTEM (IBS VARIANT)



ROAD SIGNS



Mandatory signs: These road signs inform drivers/riders of the traffic rules that apply on a certain stretch of road, thereby instructing them on how to drive/ride. Mandatory signs are distinguished by the bright red circle with black and blue markings. It is imperative that all riders follow these signs as they help avoid accidents. Their violation can be penalised under the Motor Vehicle Act.

Mandatory



Stop



Give Way



One Way



No Horn



No Bicycles



No Automobiles



No Hand Cart



No Pedestrians



No Right Turn



No 'U' Turn



Overtaking Prohibited



Speed Limit



No Stopping
or Standing



No Parking



Length Limit



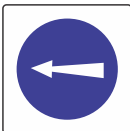
High Limit



Restriction Ends



Compulsory-
Ahead Only



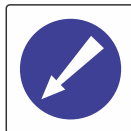
Compulsory-Turn
Left



Compulsory-Right
Ahead



Compulsory-Ahead
or Turn Right



Compulsory-Keep
Left



Compulsory-Bicycle
Track



Compulsory-Sound
Horn

ROAD SIGNS



Cautionary signs: These signs inform the driver/rider of the road conditions ahead. Cautionary signs therefore serve as a warning. They are usually in a red triangle with black pictures on a white background. Illustrations, diagrams and symbols are used to forewarn about dangers ahead. Cautionary road signs are as important as mandatory signs. However, the violation of cautionary signs does not attract penalty.

Cautionary



Right Hand Curve



Right Reverse Bend



Incline Ahead



Narrow Road Ahead



Narrow Bridge



Pedestrian Crossing



School Ahead



Gap in Medium



Cross Road



Men at Work



Roundabout



Hump Road

ROAD SIGNS



Informatory signs: These are facility signs that provide important information about road directions are maps of specific destinations. On highways, they provide information about the location of public telephones, restaurants, hospitals, parking, petrol pumps, resting-places and more. These signs are usually rectangular, with black or white pictures on a blue background.

Informatory



Destination Sign



Hospital



First Aid Post



Petrol Pump



Eating Place



Resting Place



Public Telephone



Place Identification Place



Light Refreshment



Taxi Stand



Parking Both Sides



Parking This Side



No Through Road



No Through Side Road



Re-assure Sign

Signs and Signals are language of the road. Learn them, respect them.



Hero MotoCorp Ltd.

WARRANTY

Scope of warranty

Hero MotoCorp Ltd. (hereinafter called 'Hero MotoCorp') warrants its **XTREME 125R** vehicles, assembled/manufactured in its Plants and sold through its channel partners, to be free from any defect – both in material and workmanship, under normal use and conditions, subject to the following terms & conditions.

Terms & conditions

- a) **XTREME 125R** vehicle is warranted for a period of **5 years or 70000 Km**, whichever is earlier, from the date of purchase, emission warranty is separately covered under the head of "Emission Warranty".
- b) It is advised that the purchaser avails all free and paid services from the Hero MotoCorp's authorized workshop as per the recommended schedule, to be eligible for warranty benefits. Each paid service should be availed within **90** days from the date of previous service or as per the recommended schedule, whichever is earlier.
- c) If any problem is observed in **XTREME 125R** vehicle, Hero MotoCorp's only obligation/liability is to repair or replace that part/those parts which is/are considered to be the cause of such problem, provided however that such problem has not resulted due to misuse/improper handling etc. of the vehicle. Any **XTREME 125R** vehicle needing repair should be brought to Hero MotoCorp's authorized workshop for necessary inspection and carrying rectification job.



Hero MotoCorp Ltd.

LIMITATIONS OF WARRANTY

The warranty shall not apply—

- (1) If all free services/paid services/oil top-ups are not availed as per the recommended schedule at Hero MotoCorp's workshop.
- (2) If any other engine oil which is non compatible with the product is used other than SAE 10W30 SL Grade (JASO MA2).
- (3) To normal wear & tear and ageing of components including (but not limited to) brake shoes/pads, clutch plates, drive chain & sprockets, bulbs, electrical wiring, filter, spark plug, fasteners, shims, washers, oil seals, gaskets, rubber parts, bush, rubber bellows, plastic parts breakage, wheel rim for misalignment/bend, steering ball race & cone, control cables such as brake cable/clutch cable, fuses (all types), steering handle for bend and sticker peel off.
- (4) If additional wheel(s) is/are fitted and/or any other modification carried out/unauthorized accessories fitted which shall be responsible for malfunction/deterioration of the vehicle or modifications/ alterations are made to the vehicle which are not permissible under applicable laws, or modifications, alterations, tampering or improper repair are undertaken at unauthorised workshops.
- (5) If any modifications/alterations/repairs are made to the vehicle which are (a) not as per applicable laws, and/or (b) are undertaken at unauthorized workshops.
- (6) If there has been any tampering or improper repair undertaken.
- (7) If **XTREME 125R** vehicle has been used in any competitive events like races or rallies or for any commercial purposes or if any damage results from misuse or use beyond the limitation of the intended purpose or any damage due to use under abnormal conditions.
- (8) To any damage on vehicle's painted surface cropping due to industrial pollution or other external factors.
- (9) For normal phenomena like noise, vibration, oil seepage etc., which do not affect the performance, quality and/or function, of the vehicle.
- (10) To any damage caused due to usage of improper oil/grease and/or non-genuine parts.
- (11) If any defect crops or repairs needed as a result of using adulterated fuel.
- (12) If any maintenance/repairs required due to bad road conditions or misuse of **XTREME 125R** vehicle or required due to operation or use of the vehicle at any place or for such purpose for which the vehicle is not designed or manufactured.
- (13) If any defect crops or repairs needed as a result of **XTREME 125R** vehicle meeting with some accident.
- (14) For consumables like oil, grease, gasket etc to be used during free services and/or warranty repairs.
- (15) If any damage results from repair, adjustment or maintenance operations by any method other than the methods specified by Hero MotoCorp.
- (16) If any damage results from operation, whether intentional or accidental, other than as specified in the Owner's Manual.
- (17) To electrical components such as bulbs, fuses, electrical wiring cut due to external reasons (Rat bites etc.).



Hero MotoCorp Ltd.

- (18) Any cost for periodic maintenance such as cleaning, inspection and adjustment.
- (19) To any part of the **XTREME 125R** vehicle which has been tampered or repaired in such a manner which has resulted in malfunction of the vehicle.
- (20) For **XTREME 125R** vehicle not used in accordance with the guidelines given in this Owner's Manual.
- (21) To proprietary items like tyres, tubes, batteries, etc, as they are subjected to the warranty terms & conditions of the respective manufacturers and directly handled by them only.
- (22) Any defect(s) developing on account of external factors such as environmental factors; including but not limited to fading/peeling/rusting of paint and/or stripes and/or plated parts, seat leather tearing & cracking, aluminum parts oxidation and cracking & discoloring of control switches etc. or any damage resulting from soot and smoke, use of chemical, bird droppings or damage by sea water, sea breeze or salt.
- (23) If any damage results from operation, whether intentional or accidental, other than as specified in the Owner's Manual.
- (24) If the odometer of **XTREME 125R** has been altered or tampered.
- (25) If the Vehicle's Identification Number (VIN) or Engine number has been altered or removed, or any circumstances exist that makes it difficult or impossible to establish the true history, origin and warranty coverage of the vehicle or part in question.
- (26) If any damage is caused due to a force majeure event, such as flood, fire, terrorist act, etc.

Hero MotoCorp shall not be liable for (a) any incidental, indirect or consequential damages/loss of any kind whatsoever, and (b) any delay in servicing beyond its control or the control of its authorised dealerships/workshops.

This warranty is only given by Hero MotoCorp and no employee, dealership, workshop or any other person is authorised to extend the warranty provided herein. Hero MotoCorp's obligation under this warranty shall be limited to repairing or replacing, free of cost, those parts of the vehicle which upon examination by the Hero MotoCorp may prove to the satisfaction of Hero MotoCorp to have a manufacturing defect.

Hero MotoCorp's obligation under this warranty shall be limited to repairing or replacing, free of cost, those parts of the vehicle which upon examination by Hero MotoCorp may prove to the satisfaction of Hero MotoCorp to have a manufacturing defect. Decision regarding warranty settlement shall be taken by Hero MotoCorp and the same shall be final and binding on all concern.

Subject to DELHI JURISDICTION only.



Hero MotoCorp Ltd.

BATTERY WARRANTY

Battery fitted in **XTREME 125R** is a proprietary product of the battery manufacturer and shall be fulfilled and handled directly by the battery manufacturer; Hero MotoCorp shall not be liable for the same. The battery warranty shall be for the period and governed by the terms and conditions as mentioned herein below:

Warranty Period:

The battery is warranted by the battery manufacturer for a period of **18** months from date of sale of vehicle or **20000** km whichever is earlier.

Terms and conditions of warranty

1. Batteries are warranted against all defects in material and workmanship. Liability under this warranty is limited to making good of defects arising solely from the use of faulty material or workmanship during manufacturing and developing under proper use.
The warranty commences from the date of delivery to the original purchaser of the vehicle.
2. In the event of any complaint the battery is to be returned complete with electrolyte to nearest battery service station or to the dealer. On inspection, battery will be returned or replaced.
3. This warranty card accompanies a battery sold as OEM fitment only. Claims should be supported with vehicle purchase invoice to enable processing.
4. The right to determine whether a battery needs repair or total replacement lies with the battery manufacturer. In case where the battery is replaced, the defective battery becomes the property of the company and no scrap rebate will be given for it. The warranty period on the battery being repaired/replaced shall commence from the date of sale of the original battery as stated in the original warranty card.
5. All liabilities under this warranty will cease if the battery is used on the vehicle other than that on which the battery was originally fitted and on the expiry of the warranty period as mentioned above.
6. Recharging is not covered under the purview of this warranty and shall be billed as extra. However, free of cost (FOC) battery replacement/ repair includes cost of charging.
7. This warranty does not cover damage to the battery caused by faulty electrical systems, incorrect charging and filling, improper handling of the battery by unauthorized dealers/auto electricians, maintenance, willful abuse, destruction by fire, collusion, theft or recharging.
8. Breakage of container and cover do not come under the purview of this warranty.
9. Adjudication and settlement of claim will take a couple of days as a battery has to be tested for the reported failure.
10. In case of tampering of the original wiring circuit in any manner whatsoever.
11. If a battery which is not recommended is fitted on the vehicle then such battery will not carry any warranty.
12. The applicable taxes which is leviable on the battery under repair or replacement will be borne by you (the customer).
13. You (the customer) are deemed to have read, understood and agreed to these conditions at the time of purchase of the vehicle.



Hero MotoCorp Ltd.

EMISSION WARRANTY

Scope of warranty

Hero MotoCorp Ltd. warrants all its vehicles, assembled/manufactured at its various Plants and sold through its channel partners, to comply with emission standards as specified in sub rule (2) of Rule 115 of Central Motor Vehicles Rules, 1989, subject to following terms & conditions.

Terms & conditions

- a) The emission warranty shall be applicable in India and shall remain valid for a period of 3 years or 30000 km, whichever occurs earlier, from the date of vehicle purchase.
- b) The parts, which are covered under emission warranty are fuel injector, fuel pump, throttle body, ignition coil, oxygen sensor and muffler ("Emission Related Component(s)").
- c) In case any defect is observed in any Emission-Related Component(s) which are covered under emission warranty, Hero MotoCorp's only obligation/liability shall be to repair and/or replace those part (s) which is/are considered to be the cause of non-compliance with the emission standards.
- d) The method (s) of examination to determine the warranty conditions of the Emission Related Component will be at the sole discretion of Hero MotoCorp and / or its channel partners / service center and result of such examination shall be final and binding. If on examination the warranty conditions of the Emission Related Component is / are not established, Hero MotoCorp will have the right to charge all, or part of the cost of such examination / service charges to you in addition to the cost of the components.
- e) Hero MotoCorp shall have the sole discretion to decide to replace the defective Emission Related Component or the entire assembly or any other part required for such repair.
- f) The emission warranty shall be applicable only to those vehicles, which are being regularly maintained in accordance with the maintenance schedule provided in the Owner's Manual.
- g) You should follow the recommended parts replacement as per the maintenance schedule in order to avail the emission warranty.
- h) If any Emission Related Component is/are tampered and/or repaired by unauthorized person/ workshops etc, then the emission warranty shall stand cancelled.
- i) Any Emission Related Component suffering from wear and tear under the normal course of running shall not be covered under the emission warranty. Therefore, all such parts should be replaced by you from time to time, on payment basis, as per the maintenance schedule provided in Owner's Manual and dealer's advice



Hero MotoCorp Ltd.

EMISSION WARRANTY

- j) It is recommended to avail the services as per the recommended schedule to be eligible for the emission warranty benefits. Please ensure that each paid service is availed within **90** days from the date of previous services or as per the recommended schedule, whichever is earlier. All service details should be completely filled by the dealer, in the Service Record Sheet given in the Owner's Manual.
- k) It is mandatory to obtain a PUC certificate from the authorised PUC center. In case of non-compliance with the emission standards please contact the channel partner/authorised workshop immediately along with the previous OK certificate, for the necessary rectification. The manufacturer or the dealer is not responsible for any penalty levied on you on account of non-compliance with the emission standards.
- l) Emission warranty shall not be applicable if
- The vehicle has been subjected to abnormal use, abuse, neglect and improper maintenance or has met with an accident.
 - The vehicle, or parts including the Emission Related Component(s) thereof, has been altered, tampered with or modified or replaced in an unauthorized manner.
 - The odometer is not functioning or the odometer and/or its reading has been changed/tampered with, so that the actual distance covered cannot be readily determined.
 - The vehicle has been used for competitions, races, and rallies or for the purpose of establishing records.
 - If any damage results to the Emission Related Component(s) covered under from repair, adjustment or maintenance operations by any method other than the methods specified by Hero MotoCorp.
 - If any damage results from operation, whether intentional or accidental, other than as specified in the Owner's Manual.
 - Any cost for periodic maintenance such as cleaning, inspection and adjustment.
 - If any damage is caused to the Emission Related Component(s) due to a force majeure event, such as flood, fire, terrorist act, etc.
- m) All decisions regarding emission warranty settlement shall be taken by Hero MotoCorp and shall be final binding on all concerned.

Subject to Delhi jurisdiction only.



WHAT ARE THE BENEFITS OF Hero MotoCorp GENUINE SPARE PARTS ?

- Assures long life
- Ensures economy for a long time
- Safety of vehicle and rider
- Peace of mind
- Value for money
- Assured quality

CONSEQUENTIAL DAMAGES ON USING NON-GENUINE PARTS

| | |
|-----------------------------|--|
| Clutch Plate | <ul style="list-style-type: none">• Material used is inferior• Damages other parts of clutch like, clutch center and outer clutch• Affects fuel efficiency• Poor acceleration |
| Cam Chain Kit | <ul style="list-style-type: none">• Poor performance• Reduced life |
| Gasket Cylinder Head | <ul style="list-style-type: none">• Improper sealing• Engine knocking• Leads to leakage and smoky exhaust• Higher emission level |



CONSEQUENTIAL DAMAGES ON USING NON-GENUINE PARTS

| | |
|----------------------------|---|
| Element Air Cleaner | <ul style="list-style-type: none">• Improper air filtration resulting in premature engine failure• Affects fuel efficiency• Poor engine performance |
| Spark Plug | <ul style="list-style-type: none">• Frequent stalling of engine• Higher emission level• Poor engine performance• Affects fuel efficiency |
| Brake Pads/Shoes | <ul style="list-style-type: none">• Poor braking efficiency• Rider safety—an issue• Discs/Drum wear out, resulting in subsequent repair cost |
| Chain Sprocket Kit | <ul style="list-style-type: none">• Noisy Operation• Failure of chain can cause fatal accident |

ZONAL/REGIONAL/AREA OFFICES

For any of your service related query/requirements you may contact the respective Zonal/Regional/Area Offices

CENTRAL ZONE

Hero MotoCorp Ltd., No. 208, 209, 210- 2nd floor, Ganpati Plaza, M.I. Road, Jaipur-302001, (Rajasthan).
Tel: +91 141-2389031, 2389156, 2389252, E-mail: jaipur@heromotocorp.com

Hero MotoCorp Ltd., Office No. 705-706, 7th Floor, Manglam Fun Square, Durga Nursery Road, Udaipur -313001 (Rajasthan). Tel: +91 0294-2980578, 79, E-mail: udaipur@heromotocorp.com

Hero MotoCorp Ltd., Office. No.401, 4th Floor, Offizo, Magneto Mall, Labhandi, G.E. Road, Raipur -492 001, (Chhattisgarh)
Tel: +91-771-4034749, E-mail: raipur@heromotocorp.com

Hero MotoCorp Ltd., Office No. 55 to 59, 1st Floor, Maple High Street, Opposite Aashima Mall, Hoshangabad Road, Bhopal-462026, India. Tel: +91-755-2994416, +91-755-2994398, E-mail: bhopal@heromotocorp.com

Hero MotoCorp Ltd., Maloo-01, 601-602, 6th Floor, Plot No. 26C, Scheme No. 94, Ring Road, Indore, M.P.-452010, Tel: +91-731-4978269, 70, E-mail: indore@heromotocorp.com

EAST ZONE

Hero MotoCorp Ltd., Flat No: 1002. 10th Floor, Martin Burn Business Park, BP3, Salt Lake, Sector-V, Kolkata-700091, West Bengal, India. Tel : +91-33-44026841,+91-33-44026830, E-mail : kolkata@heromotocorp.com

Hero MotoCorp Ltd., Odysa Business Centre, Plot no. 30, 30/982, 172/1030, 4th Floor Cuttack, Bhubaneswar highway road, Rasulgari, Bhubaneswar-751010, Odisha, India. Tel: +91-674-2581161, 62, 63, 64, E-mail: bhubaneswar@heromotocorp.com

Hero MotoCorp Ltd., Yash Heights, 1st Floor Bariatu Road, Above Basudeb Tata Showroom Ranchi-834009, Jharkhand, India. Tel: +91-651-2542222, 2542224, 2542225, E-mail: ranchi@heromotocorp.com

Hero MotoCorp Ltd., Sai Corporate Park, A Block, 6th Floor, Rukanpura, Bailey Road Patna, Bihar - 800014
Tel: +910612-2590587/88/89 E-mail: patna@heromotocorp.com

Hero MotoCorp Ltd., 158, Christian Basti, Golden Heights, 3rd Floor, Reliance Trend Building, Adjacent Central Mall, G.S. road, Kamrup, Assam-781005 Tel: 0361-2340058 E-mail: guwahati@heromotocorp.com

NORTH ZONE

Hero MotoCorp Ltd., 3rd Floor, Tower-A, DLF Centre Court, Sector-42, Golf Course Road, Gurgaon -122002, Haryana, India. Tel: 0124-4754800, E-mail: delhi@heromotocorp.com

Hero MotoCorp Ltd., 602, 6th Floor, Tower A, Plot No BW 58, Logix City Center, Sector-32, Noida - 201301. Uttar Pradesh Tel: 0120-4631000, E-mail: noida@heromotocorp.com

Hero MotoCorp Ltd., S.C.O-367-368, First Floor, Sector-34A, Chandigarh-160022, India.
Tel: +91-172-2623773, 2623774, 2623775, E-mail: chandigarh@heromotocorp.com

NORTH ZONE

Hero MotoCorp Ltd., Kapoor Towers, Plot No- 284, 15-B, Rajpur Road, Dehradun-248001, Uttarakhand, India.
Tel:0135-2714661,2713662,2714663, E-mail: dehradun@heromotocorp.com

Hero MotoCorp Ltd., Summit Building (10th Floor) Plot No TCG 3/3 Vibhuti Khand, Gomti Nagar Lucknow - 226010, India. Tel: 0522-4006594, E-mail: lucknow@heromotocorp.com

Hero MotoCorp Ltd., C-19/134-B ,Third Floor I .P Grand, Lallapura, Sgra, Varanasi, Uttar Pradesh - 221010, India.
Tel: +91-0542- 2390949,2390241, E-mail: varanasi@heromotocorp.com

SOUTH ZONE

Hero MotoCorp Ltd., SKAV 909, 3rd Floor, 9/1, Lavelle Road, Bangalore-560001, India.
Tel: +91-80-46881000, E-mail: bangalore@heromotocorp.com

Hero MotoCorp Ltd., 3-6-289, 3rd Floor, Kareem Manzil, Hyderguda, Hyderabad-500029, India.
Tel:+91-40-23223735/3727, E-mail: hyderabad@heromotocorp.com

Hero MotoCorp Ltd., 9th Floor Seshachalam Centre No.636/1, Anna Salai, Nandanam, Chennai-600035, India.
Tel: +91-44- 24340974, 24340977, 24340978, E-mail: chennai@heromotocorp.com

Hero MotoCorp Ltd., 6-A, DD Trade Tower, (6th Floor), Kaloor-Kadavanthra Road, Kaloor-682 017, Kochi-682017, India. Tel: +91-0484- 4039646 -7, E-mail: cochin@heromotocorp.com

Hero MotoCorp Ltd., No 1547, 2nd Floor Classic Towers, Trichy Road, Coimbatore - 641018
Tel: +91-422-2200058, 2200061, E-mail: coimbatore@heromotocorp.com

Hero MotoCorp Ltd., First Floor VA Kalburgi Mahalakshmi Mansion, Mandakini Hospital Road, New Cotton Market, Hubli-580029, India. Tel: 0836-2269717, 2361038, E-mail: hubli@heromotocorp.com

Hero MotoCorp Ltd., D.NO. 54-11-18 E, 2nd Floor, Sai Oddessey Building, Opp Executive Club, Near NH-5, Vijayawada-520008, Andhra Pradesh, India. Tel: +91-866-2546859, E-mail: vijayawada@heromotocorp.com

WEST ZONE

Hero MotoCorp Ltd., Chrome Building, Sr. No. 33, Hissa-A-1/1/2, Plot - 2, Viman Nagar Avenue 2, Nagar Road, Pune-411014, India. Tel: +91-020-71903500, E-mail: pune@heromotocorp.com

Hero MotoCorp Ltd., 604, Gunjan Tower, Off Alembic Gorwa Road, Baroda-390023, India.
Tel: +91-265-2286569/2286570, E-mail: baroda@heromotocorp.com

Hero MotoCorp Ltd., Ground Floor, Block No.2, Vishnu Vaibhav Complex, 222, Palm Road, Civil Lines, Nagpur-440001, India. Tel: +91-712-2545990-91, E-mail: nagpur@heromotocorp.com

Hero MotoCorp Ltd., Classic Stripes House, 3rd Floor 76/79, Makwana Lane, Takpada Off. Andheri-Kurla Road Marol, Andheri Easta, Mumbai-400059, India. Tel: +91-22-28562071, E-mail: mumbai@heromotocorp.com

Hero MotoCorp Ltd., B-201, 2nd floor, Pride Corporate Royal Park, Kalavad Road, Rajkot -360001
Tel: 0281-2460622, 2460623, E-mail: rajkot@heromotocorp.com

Hero MotoCorp Ltd.

Registered Office

The Grand Plaza, Plot No. 2, Nelson Mandela Road, Vasant Kunj,
Phase - II, New Delhi - 110070, India.

CIN: L35911DL1984PLC017354, PAN: AAACH0812J

Phone No.: 011-46044100; Fax No.: 011-26143198, 26143321

Toll-Free No.: 1800 - 266 - 0018
Website: www.heromotocorp.com

Publication No.: 63ACLAEOHMCL